

For Research Use Only

Syntaxin 6 Recombinant antibody

Catalog Number: 84627-5-RR



Basic Information

Catalog Number:

84627-5-RR

Concentration:

1000 µg/ml

Source:

Rabbit

Isotype:

IgG

Immunogen Catalog Number:

AG1284

GenBank Accession Number:

BC009944

GeneID (NCBI):

10228

UNIPROT ID:

O43752

Full Name:

syntaxin 6

Calculated MW:

29 kDa

Observed MW:

32 kDa

Purification Method:

Protein A purification

CloneNo.:

242100A9

Recommended Dilutions:

WB 1:2000-1:10000

IP 0.5-4.0 µg for 1.0-3.0 mg of total protein lysate

IHC 1:200-1:800

IF/ICC 1:250-1:1000

Applications

Tested Applications:

WB, IHC, IF/ICC, IP, ELISA

Species Specificity:

human, mouse, rat

Note-IHC: suggested antigen retrieval with TE buffer pH 9.0; (*) Alternatively, antigen retrieval may be performed with citrate buffer pH 6.0

Positive Controls:

WB : A549 cells, PC-12 cells, Neuro-2a cells, fetal human brain tissue, mouse brain tissue, rat brain tissue

IP : mouse brain tissue,

IHC : mouse brain tissue,

IF/ICC : PC-12 cells,

Background Information

Syntaxin-6 (STX6) is a SNARE protein located in the trans-Golgi network (TGN) and endosomes. It associates with a variety of SNARE proteins and is involved in intracellular vesicle trafficking. STX6 is required for sorting proteins from endosomes toward either the TGN or lysosomes.

Storage

Storage:

Store at -20°C. Stable for one year after shipment.

Storage Buffer:

PBS with 0.02% sodium azide and 50% glycerol pH 7.3.

Aliquoting is unnecessary for -20°C storage

For technical support and original validation data for this product please contact:

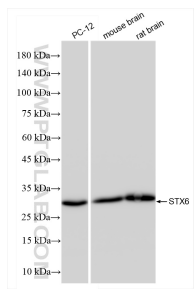
T: 4006900926

E: Proteintech-CN@ptglab.com

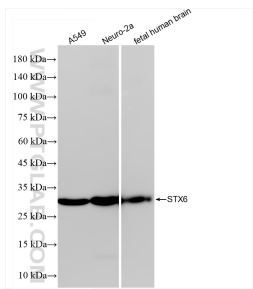
W: ptgcn.com

This product is exclusively available under Proteintech Group brand and is not available to purchase from any other manufacturer.

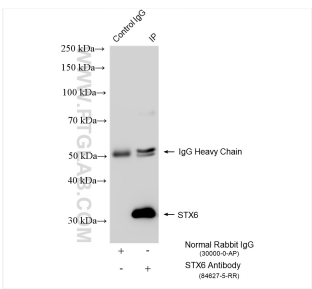
Selected Validation Data



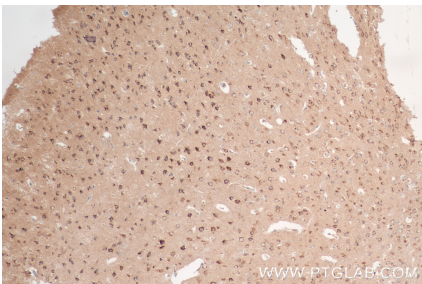
Various lysates were subjected to SDS PAGE followed by western blot with 84627-5-RR (Syntxin 6 antibody) at dilution of 1:5000 incubated at room temperature for 1.5 hours.



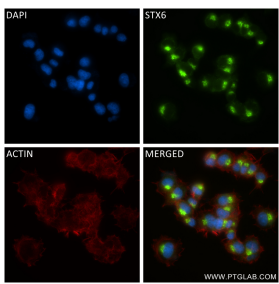
Various lysates were subjected to SDS PAGE followed by western blot with 84627-5-RR (Syntxin 6 antibody) at dilution of 1:5000 incubated at room temperature for 1.5 hours.



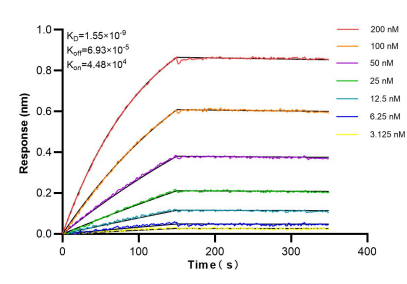
IP result of anti-Syntxin 6 (IP:84627-5-RR, 4ug; Detection:84627-5-RR 1:1500) with mouse brain tissue lysate 1840 ug.



Immunohistochemical analysis of paraffin-embedded mouse brain tissue slide using 84627-5-RR (Syntxin 6 antibody) at dilution of 1:400 (under 10x lens). Heat mediated antigen retrieval with Tris-EDTA buffer (pH 9.0).



Immunofluorescent analysis of (4% PFA) fixed PC-12 cells using Syntxin 6 antibody (84627-5-RR, Clone: 242100A9) at dilution of 1:500 and CoraLite® 488-Conjugated Goat Anti-Rabbit IgG(H+L) (SA00013-2), CL594-Phalloidin (red).



Bilayer interferometry (BLI) kinetic assays of 84627-5-RR against Human Syntxin 6 were performed. The affinity constant is 1.55 nM.