

For Research Use Only

# SETD5 Recombinant antibody

Catalog Number: 84622-4-RR



## Basic Information

Catalog Number:

84622-4-RR

Concentration:

1000 µg/ml

Source:

Rabbit

Isotype:

IgG

Immunogen Catalog Number:

AG28929

GenBank Accession Number:

BC020956

GeneID (NCBI):

55209

UNIPROT ID:

Q9C0A6

Full Name:

SET domain containing 5

Observed MW:

160-220 kDa

Purification Method:

Protein A purification

CloneNo.:

241903D4

Recommended Dilutions:

WB 1:500-1:2000

## Applications

Tested Applications:

WB, ELISA

Species Specificity:

human

Positive Controls:

WB : SH-SY5Y cells, HEK-293T cells, HeLa cells

## Background Information

SETD5, also known as KIAA1757, is a member of the histone lysine methyltransferase family. It has 3 isoforms and is involved in a variety of cellular functions, including cell cycle regulation and cell proliferation, and has a potential role in early embryonic development (PMID: 36875494).

## Storage

Storage:

Store at -20°C. Stable for one year after shipment.

Storage Buffer:

PBS with 0.02% sodium azide and 50% glycerol pH 7.3.

Aliquoting is unnecessary for -20°C storage

For technical support and original validation data for this product please contact:

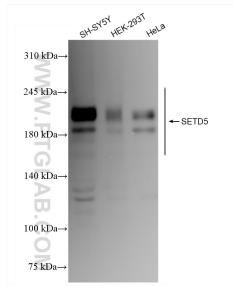
T: 4006900926

E: [Proteintech-CN@ptglab.com](mailto:Proteintech-CN@ptglab.com)

W: [ptgcn.com](http://ptgcn.com)

This product is exclusively available under Proteintech Group brand and is not available to purchase from any other manufacturer.

## Selected Validation Data



Various lysates were subjected to SDS PAGE followed by western blot with 84622-4-RR (SETD5 antibody) at dilution of 1:1000 incubated at room temperature for 1.5 hours.