

For Research Use Only

SPARC Recombinant antibody, PBS Only (Capture)

Catalog Number: 84621-1-PBS



Basic Information

Catalog Number:

84621-1-PBS

Size:

1 mg/ml

Source:

Rabbit

Isotype:

IgG

GenBank Accession Number:

NM_003118.4

GeneID (NCBI):

6678

UNIPROT ID:

P09486

Full Name:

secreted protein, acidic, cysteine-rich
(osteonectin)

Calculated MW:

35kDa

Purification Method:

Protein A purification

CloneNo.:

241952A12

Applications

Tested Applications:

Cytometric bead array, Sandwich ELISA, Indirect ELISA,
Sample test

Species Specificity:

human

Background Information

Storage

Storage:

Store at -80°C.

The product is shipped with ice packs. Upon receipt, store it immediately at -80°C

Storage Buffer:

PBS Only

For technical support and original validation data for this product please contact:

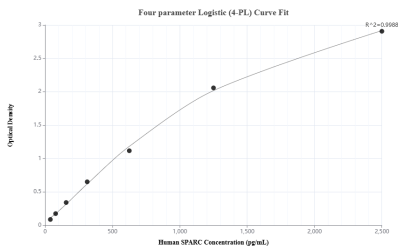
T: 4006900926

E: Proteintech-CN@ptglab.com

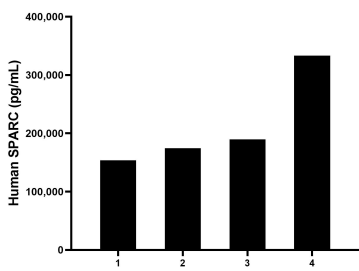
W: ptgcn.com

This product is exclusively available under Proteintech Group brand and is not available to purchase from any other manufacturer.

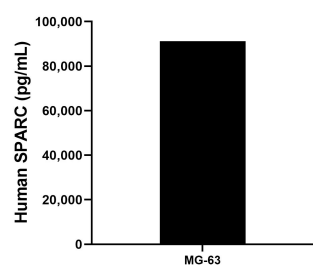
Selected Validation Data



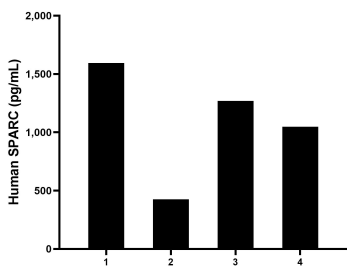
Sandwich ELISA standard curve of MP01430-2, Human SPARC Recombinant Matched Antibody Pair - PBS only. 84621-1-PBS was coated to a plate as the capture antibody and incubated with serial dilutions of standard Eg1169. 84621-3-PBS was HRP conjugated as the detection antibody. Range: 39.1-1250 pg/mL



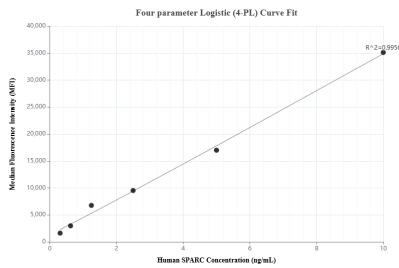
Serum of four healthy human donors was measured. The human SPARC concentration of detected samples was determined to be 212,811.0 pg/mL with a range of 153,761.1 - 333,381.8 pg/mL



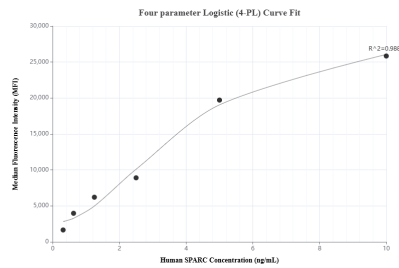
MG-63 cells were cultured in DMEM supplemented with 10% fetal bovine serum. An aliquot of the cell culture supernate was removed, assayed for human SPARC, and measured 91,240.8 pg/mL



Human milk of four healthy human donors was measured. The human SPARC concentration of detected samples was determined to be 1,084.0 pg/mL with a range of 425.0 - 1,594.2 pg/mL



Cytometric bead array standard curve of MP01430-1, SPARC Recombinant Matched Antibody Pair, PBS Only. Capture antibody: 84621-1-PBS. Detection antibody: 84621-2-PBS. Standard: Eg1169. Range: 0.313-10 ng/mL



Cytometric bead array standard curve of MP01430-2, SPARC Recombinant Matched Antibody Pair, PBS Only. Capture antibody: 84621-1-PBS. Detection antibody: 84621-3-PBS. Standard: Eg1169. Range: 0.313-10 ng/mL