

For Research Use Only

USP36 Recombinant antibody, PBS Only (Capture)

Catalog Number: 84620-3-PBS



Basic Information

Catalog Number:	GenBank Accession Number:	Purification Method:
84620-3-PBS	BC038983	Protein A purification
Concentration:	GeneID (NCBI):	CloneNo.:
1 mg/ml	57602	241962H7
Source:	UNIPROT ID:	
Rabbit	Q9P275	
Isotype:	Full Name:	
IgG	ubiquitin specific peptidase 36	
Immunogen Catalog Number:	Calculated MW:	
AG6411	1123 aa, 123 kDa	
	Observed MW:	
	140 kDa	

Applications

Tested Applications:
WB, Cytometric bead array, Sandwich ELISA, Indirect ELISA, Sample test

Species Specificity:
human

Background Information

USP36 (Ubiquitin carboxyl-terminal hydrolase 36) is also named as KIAA1453, FLJ12851, DUB1 and belongs to the peptidase C19 family. It regulates the transcription and processing of rRNA by deubiquitylating various proteins involved in these processes, and the aberrant nucleolar structure in its absence is secondary to deficient ribosome biogenesis. USP36 plays a crucial role in regulating the structure and function of nucleoli. (PMID:19208757). The ubiquitin-specific protease that is required in germline, epithelial, and intestinal stem cells (PMID:19039105). It has 2 isoforms produced by alternative splicing.

Storage

Storage:
Store at -80°C.
The product is shipped with ice packs. Upon receipt, store it immediately at -80°C

Storage Buffer:
PBS Only

For technical support and original validation data for this product please contact:

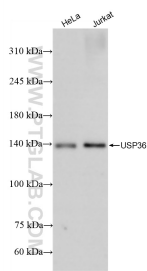
T: 4006900926

E: Proteintech-CN@ptglab.com

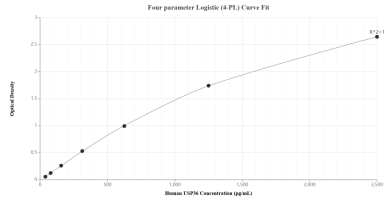
W: ptgcn.com

This product is exclusively available under Proteintech Group brand and is not available to purchase from any other manufacturer.

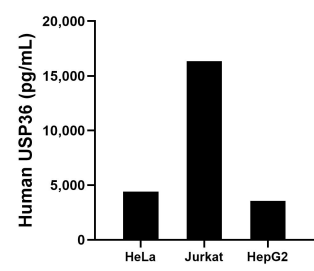
Selected Validation Data



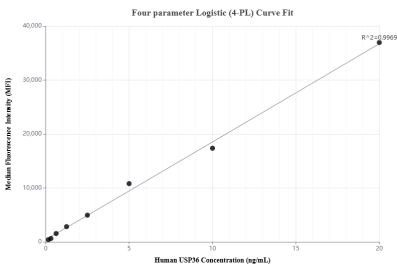
Various lysates were subjected to SDS PAGE followed by western blot with 84620-3-RR (USP36 antibody) at dilution of 1:5000 incubated at room temperature for 1.5 hours. This data was developed using the same antibody clone with 84620-3-PBS in a different storage buffer formulation.



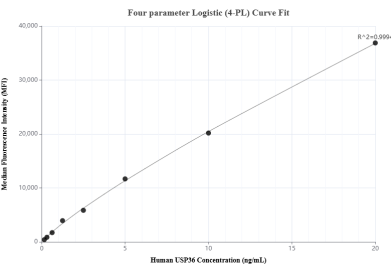
Sandwich ELISA standard curve of MP01428-1, Human USP36 Recombinant Matched Antibody Pair - PBS only. 84620-3-PBS was coated to a plate as the capture antibody and incubated with serial dilutions of standard Ag6411. 84620-1-PBS was HRP conjugated as the detection antibody. Range: 39.1-2500 pg/mL.



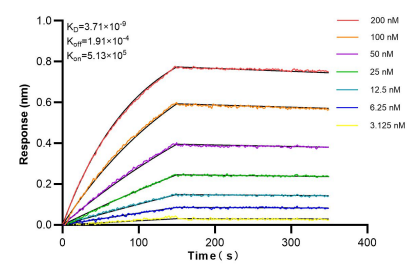
The mean USP36 concentration was determined to be 4,390.7 pg/mL in HeLa cell extract based on a 1.3 mg/mL extract load, 16,332.6 pg/mL in Jurkat cell extract based on a 1.5 mg/mL extract load and 3,553.0 pg/mL in HepG2 cell extract based on a 1.0 mg/mL extract load.



Cytometric bead array standard curve of MP01428-1, USP36 Recombinant Matched Antibody Pair, PBS Only. Capture antibody: 84620-3-PBS. Detection antibody: 84620-1-PBS. Standard: Ag6411. Range: 0.156-20 ng/mL.



Cytometric bead array standard curve of MP01428-2, USP36 Recombinant Matched Antibody Pair, PBS Only. Capture antibody: 84620-3-PBS. Detection antibody: 84620-2-PBS. Standard: Ag6411. Range: 0.156-20 ng/mL.



Bi-layer interferometry (BLI) kinetic assays of 84620-3-RR against Human USP36 were performed. The affinity constant is 3.71 nM.