

For Research Use Only

PSMA/GCPII Recombinant antibody, PBS Only (Capture)

Catalog Number: 84615-2-PBS



Basic Information

Catalog Number:

84615-2-PBS

Size:

1 mg/ml

Source:

Rabbit

Isotype:

IgG

GenBank Accession Number:

NM_004476.3

GeneID (NCBI):

2346

UNIPROT ID:

Q04609

Full Name:

folate hydrolase (prostate-specific membrane antigen) 1

Calculated MW:

84KD

Purification Method:

Protein A purification

CloneNo.:

242026F4

Applications

Tested Applications:

IF/ICC, Cytometric bead array, Sandwich ELISA, Indirect ELISA, Sample test

Species Specificity:

human

Background Information

Storage

Storage:

Store at -80°C.

The product is shipped with ice packs. Upon receipt, store it immediately at -80°C

Storage Buffer:

PBS Only

For technical support and original validation data for this product please contact:

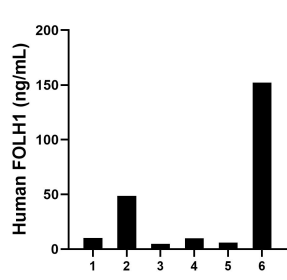
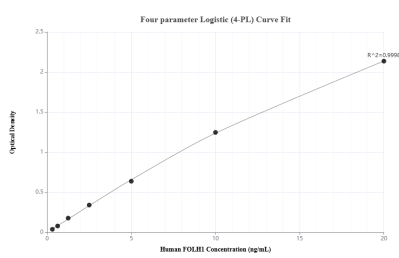
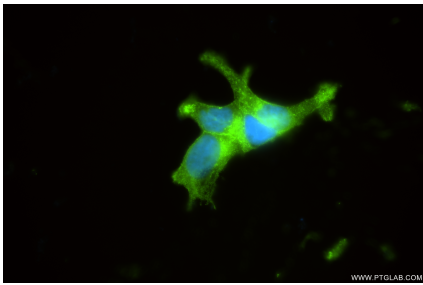
T: 4006900926

E: Proteintech-CN@ptglab.com

W: ptgcn.com

This product is exclusively available under Proteintech Group brand and is not available to purchase from any other manufacturer.

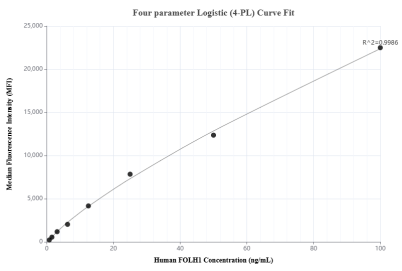
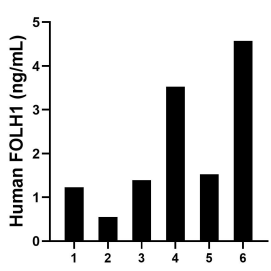
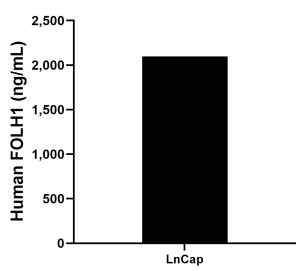
Selected Validation Data



Immunofluorescent analysis of (4% PFA) fixed LNCaP cells using FOLH1 antibody (84615-2-RR, Clone: 242026F4) at dilution of 1:250 and CoraLite®488-Conjugated Goat Anti-Rabbit IgG(H+L) (SA00013-2). This data was developed using the same antibody clone with 84615-2-PBS in a different storage buffer formulation.

Sandwich ELISA standard curve of MP01454-1, Human FOLH1 Recombinant Matched Antibody Pair - PBS only. 84615-2-PBS was coated to a plate as the capture antibody and incubated with serial dilutions of standard Eg0216. 84615-1-PBS was HRP conjugated as the detection antibody. Range: 0.313-20 ng/mL

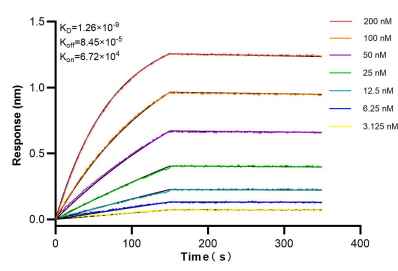
Serum of six individual healthy human donors was measured. The human FOLH1 concentration of detected samples was determined to be 38.61 ng/mL with a range of 4.93 - 152.25 ng/mL.



The mean FOLH1 concentration was determined to be 2,098.65 ng/mL in LnCap cell extract based on a 2.0 mg/mL extract load.

Saliva of six individual healthy human donors was measured. The human FOLH1 concentration of detected samples was determined to be 2.13 ng/mL with a range of 0.55 - 4.58 ng/mL

Cytometric bead array standard curve of MP01454-1, FOLH1 Recombinant Matched Antibody Pair, PBS Only. Capture antibody: 84615-2-PBS. Detection antibody: 84615-1-PBS. Standard: Eg0216. Range: 0.781-100 ng/mL



Biolayer interferometry (BLI) kinetic assays of 84615-2-RR against Human PSMA/GCPII were performed. The affinity constant is 1.26 nM.