

For Research Use Only

# PDP1 Recombinant antibody, PBS Only (Detector)

Catalog Number: 84612-3-PBS



## Basic Information

Catalog Number:

84612-3-PBS

Size:

1 mg/ml

Source:

Rabbit

Isotype:

IgG

Immunogen Catalog Number:

AG15453

GenBank Accession Number:

BC047619

GeneID (NCBI):

54704

UNIPROT ID:

Q9P0J1

Full Name:

protein phosphatase 2C, magnesium-dependent, catalytic subunit

Calculated MW:

537 aa, 61 kDa

Observed MW:

55-61 kDa

Purification Method:

Protein A purification

CloneNo.:

242090E7

## Applications

Tested Applications:

WB, Cytometric bead array, Indirect ELISA

Species Specificity:

human, mouse

## Background Information

Pyruvate dehydrogenase phosphatase 1 (PDP1), also known as PPM2C, is a key hormone-regulated metabolic enzyme that dephosphorylates and activates pyruvate dehydrogenase (PDH), thereby stimulating the conversion of pyruvate into acetyl-CoA (PMID: 36453802). PDP1 expression is regulated by FLT3-ITD in a context-dependent manner, and that it is centrally involved in the adaptation of AML glucose metabolism to the requirements of proliferation, survival and the therapeutic response to FLT3 inhibition (PMID: 37935978).

## Storage

Storage:

Store at -80°C.

The product is shipped with ice packs. Upon receipt, store it immediately at -80°C

Storage Buffer:

PBS Only

For technical support and original validation data for this product please contact:

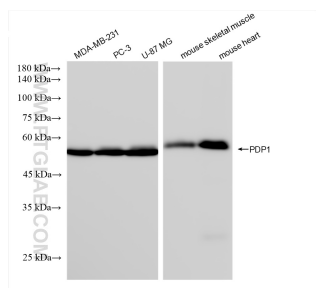
T: 4006900926

E: Proteintech-CN@ptglab.com

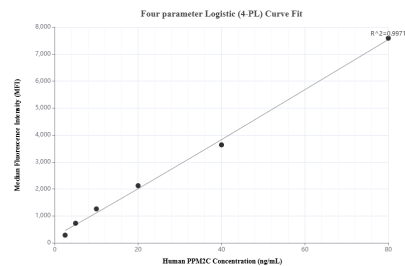
W: ptgcn.com

This product is exclusively available under Proteintech Group brand and is not available to purchase from any other manufacturer.

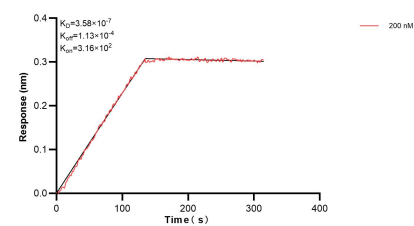
## Selected Validation Data



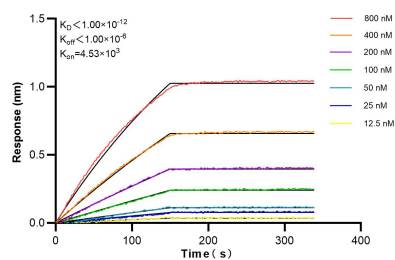
Various lysates were subjected to SDS PAGE followed by western blot with 84612-3-RR (PDP1 antibody) at dilution of 1:10000 incubated at room temperature for 1.5 hours. This data was developed using the same antibody clone with 84612-3-PBS in a different storage buffer formulation.



Cytometric bead array standard curve of MP01450-2, PPM2C Recombinant Matched Antibody Pair, PBS Only. Capture antibody: 84612-1-PBS. Detection antibody: 84612-3-PBS. Standard: Ag15453. Range: 2.5-80 ng/mL.



Biolayer interferometry (BLI) kinetic assay of 84612-3-PBS against Human PDP1 was performed. The affinity constant is 358 nM.



Biolayer interferometry (BLI) kinetic assays of 84612-3-RR against Human PDP1 were performed. The affinity constant is below 1 pM.