

For Research Use Only

INTS6 Recombinant monoclonal antibody, PBS Only (Capture)

Catalog Number: 84610-3-PBS

Featured Product



Basic Information

Catalog Number:

84610-3-PBS

Source:

Rabbit

Isotype:

IgG

Immunogen Catalog Number:

AG36146

GenBank Accession Number:

BC039829

GeneID (NCBI):

26512

UNIPROT ID:

Q9UL03

Full Name:

integrator complex subunit 6

Calculated MW:

100 kDa

Purification Method:

Protein A purification

CloneNo.:

242099E6

Applications

Tested Applications:

IHC, IF/ICC, FC (Intra), Cytometric bead array, Sandwich ELISA, Indirect ELISA

Species Specificity:

human, mouse

Background Information

INTS6 is a component of the Integrator (INT) complex, a complex involved in the small nuclear RNAs (snRNA) U1 and U2 transcription and in their 3'-box-dependent processing.

Storage

Storage:

Store at -80°C.

The product is shipped with ice packs. Upon receipt, store it immediately at -80°C

Storage Buffer:

PBS only, pH7.3

For technical support and original validation data for this product please contact:

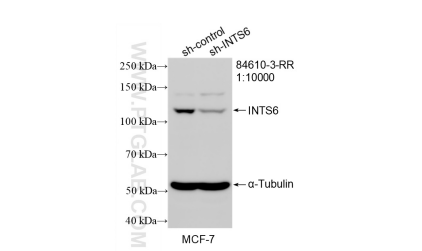
T: 4006900926

E: Proteintech-CN@ptglab.com

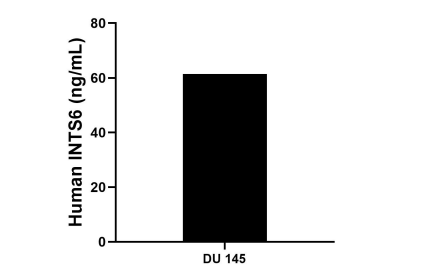
W: ptgcn.com

This product is exclusively available under Proteintech Group brand and is not available to purchase from any other manufacturer.

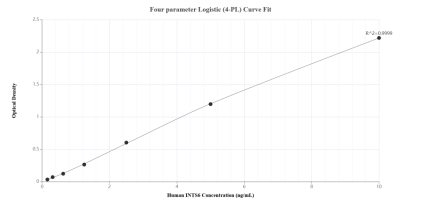
Selected Validation Data



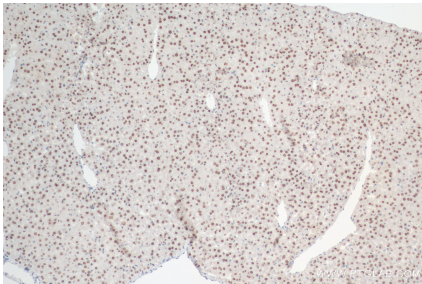
WB result of INTS6 antibody (84610-3-RR; 1:10000; incubated at room temperature for 1.5 hours) with sh-Control and sh-INTS6 transfected MCF-7 cells. This data was developed using the same antibody clone with 84610-3-PBS in a different storage buffer formulation.



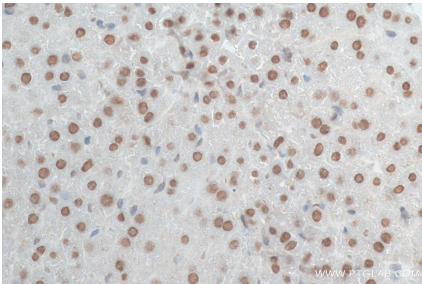
The mean INTS6 concentration was determined to be 61.44 ng/mL in DU 145 cell extract based on a 1.00 mg/mL extract load.



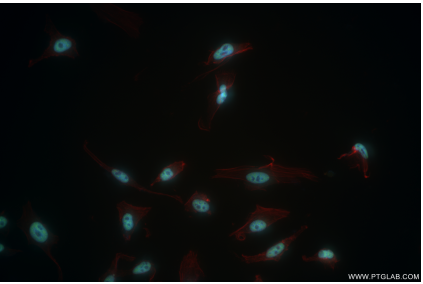
Sandwich ELISA standard curve of MP01446-1, Human INTS6 Recombinant Matched Antibody Pair - PBS only. 84610-3-PBS was coated to a plate as the capture antibody and incubated with serial dilutions of standard Ag36146. 84610-1-PBS was HRP conjugated as the detection antibody. Range: 0.156-10 ng/mL



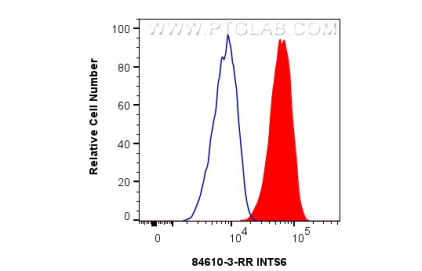
Immunohistochemical analysis of paraffin-embedded mouse liver tissue slide using 84610-3-RR (INTS6 antibody) at dilution of 1:1000 (under 10x lens). Heat mediated antigen retrieval with Tris-EDTA buffer (pH 9.0). This data was developed using the same antibody clone with 84610-3-PBS in a different storage buffer formulation.



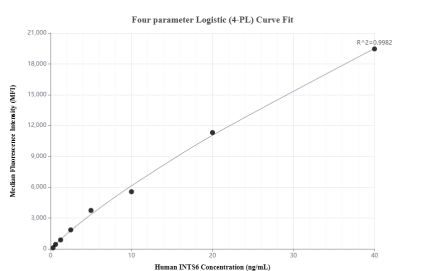
Immunohistochemical analysis of paraffin-embedded mouse liver tissue slide using 84610-3-RR (INTS6 antibody) at dilution of 1:1000 (under 40x lens). Heat mediated antigen retrieval with Tris-EDTA buffer (pH 9.0). This data was developed using the same antibody clone with 84610-3-PBS in a different storage buffer formulation.



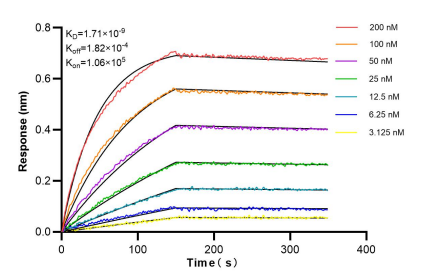
Immunofluorescent analysis of (4% PFA) fixed HeLa cells using INTS6 antibody (84610-3-RR, Clone: 242099E6) at dilution of 1:500 and CoraLite@488-Conjugated Goat Anti-Rabbit IgG(H+L) (SA00013-2), CL594-Phalloidin (red). This data was developed using the same antibody clone with 84610-3-PBS in a different storage buffer formulation.



1x10⁶ U-251 cells were intracellularly stained with 0.25 ug INTS6 Recombinant antibody (84610-3-RR, Clone:242099E6) and CoraLite@488-Conjugated Goat Anti-Rabbit IgG(H+L) (SA00013-2)(red), or 0.25 ug Rabbit IgG Isotype Control RecAb (98136-1-RR, Clone: 240953C9) (blue). Cells were fixed and permeabilized with Transcription Factor Staining Buffer Kit (PF00011). This data was developed using the same antibody clone with 84610-3-PBS in a different storage buffer



Cytometric bead array standard curve of MP01446-1, INTS6 Recombinant Matched Antibody Pair, PBS Only. Capture antibody: 84610-3-PBS. Detection antibody: 84610-1-PBS. Standard: Ag36146. Range: 0.313-40 ng/mL



Bi-layer interferometry (BLI) kinetic assays of 84610-3-RR against Human INTS6 were performed. The affinity constant is 1.71 nM.