

For Research Use Only

INTS6 Recombinant antibody, PBS Only (Detector)

Catalog Number: 84610-1-PBS



Basic Information

Catalog Number:

84610-1-PBS

Concentration:

1 mg/ml

Source:

Rabbit

Isotype:

IgG

Immunogen Catalog Number:

AG36146

GenBank Accession Number:

BC039829

GeneID (NCBI):

26512

UNIPROT ID:

Q9UL03

Full Name:

integrator complex subunit 6

Calculated MW:

100 kDa

Observed MW:

130 kDa

Purification Method:

Protein A purification

CloneNo.:

242099C7

Applications

Tested Applications:

WB, IF/ICC, Cytometric bead array, Sandwich ELISA, Indirect ELISA, Sample test

Species Specificity:

human

Background Information

INTS6 is a component of the Integrator (INT) complex, a complex involved in the small nuclear RNAs (snRNA) U1 and U2 transcription and in their 3'-box-dependent processing.

Storage

Storage:

Store at -80°C.

The product is shipped with ice packs. Upon receipt, store it immediately at -80°C

Storage Buffer:

PBS Only

For technical support and original validation data for this product please contact:

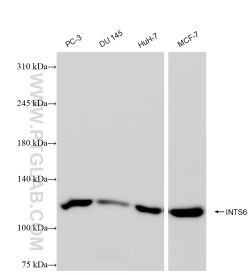
T: 4006900926

E: Proteintech-CN@ptglab.com

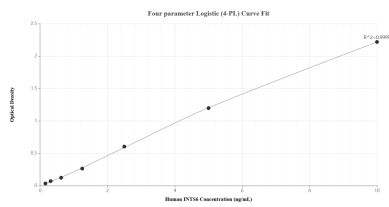
W: ptgcn.com

This product is exclusively available under Proteintech Group brand and is not available to purchase from any other manufacturer.

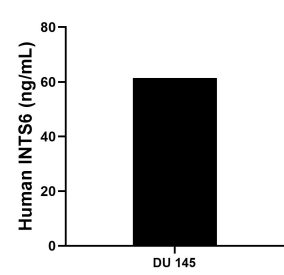
Selected Validation Data



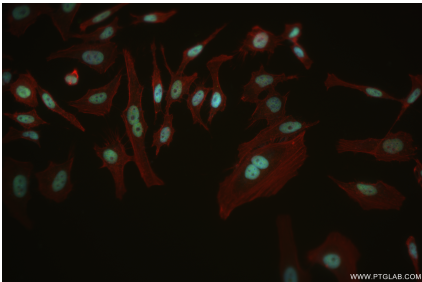
Various lysates were subjected to SDS PAGE followed by western blot with 84610-1-RR (INTS6 antibody) at dilution of 1:4000 incubated at room temperature for 1.5 hours. This data was developed using the same antibody clone with 84610-1-PBS in a different storage buffer formulation.



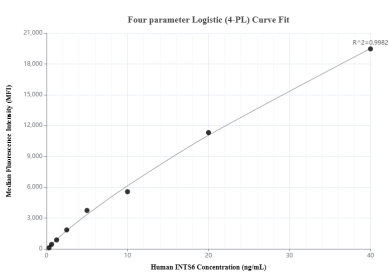
Sandwich ELISA standard curve of MP01446-1, Human INTS6 Recombinant Matched Antibody Pair - PBS only. 84610-3-PBS was coated to a plate as the capture antibody and incubated with serial dilutions of standard Ag36146. 84610-1-PBS was HRP conjugated as the detection antibody. Range: 0.156-10 ng/mL.



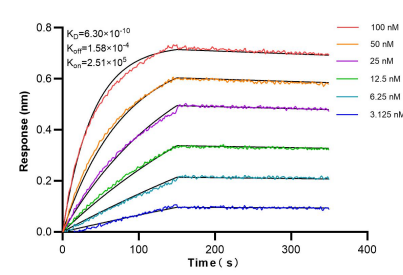
The mean INTS6 concentration was determined to be 61.44 ng/mL in DU 145 cell extract based on a 1.00 mg/mL extract load.



Immunofluorescent analysis of (4% PFA) fixed HeLa cells using INTS6 antibody (84610-1-RR, Clone: 242099C7) at dilution of 1:500 and CoraLite@488-Conjugated Goat Anti-Rabbit IgG(H+L) (SA00013-2), CL594-Phalloidin (red). This data was developed using the same antibody clone with 84610-1-PBS in a different storage buffer formulation.



Cytometric bead array standard curve of MP01446-1, INTS6 Recombinant Matched Antibody Pair, PBS Only. Capture antibody: 84610-3-PBS. Detection antibody: 84610-1-PBS. Standard: Ag36146. Range: 0.313-40 ng/mL.



Bi-layer interferometry (BLI) kinetic assays of 84610-1-RR against Human INTS6 were performed. The affinity constant is 0.63 nM.