

For Research Use Only

# Mouse CD31/PECAM-1 Recombinant antibody, PBS Only (Capture)

Catalog Number: 84607-1-PBS



## Basic Information

Catalog Number:

84607-1-PBS

Concentration:

1 mg/ml

Source:

Rabbit

Isotype:

IgG

Immunogen Catalog Number:

EG0846

GenBank Accession Number:

NM\_001305157.1

GeneID (NCBI):

18613

UNIPROT ID:

Q08481-1

Full Name:

platelet/endothelial cell adhesion molecule 1

Calculated MW:

81 kDa

Purification Method:

Protein A purification

CloneNo.:

242041D6

## Applications

Tested Applications:

Cytometric bead array, Sandwich ELISA, Indirect ELISA, Sample test

Species Specificity:

mouse

## Background Information

### Storage

Storage:

Store at -80°C.

The product is shipped with ice packs. Upon receipt, store it immediately at -80°C

Storage Buffer:

PBS only, pH7.3

For technical support and original validation data for this product please contact:

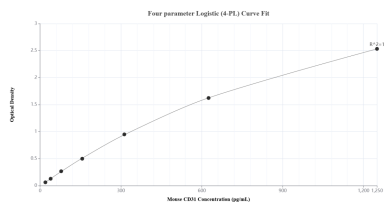
T: 4006900926

E: Proteintech-CN@ptglab.com

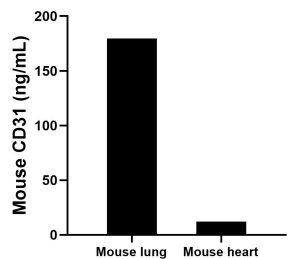
W: ptgcn.com

This product is exclusively available under Proteintech Group brand and is not available to purchase from any other manufacturer.

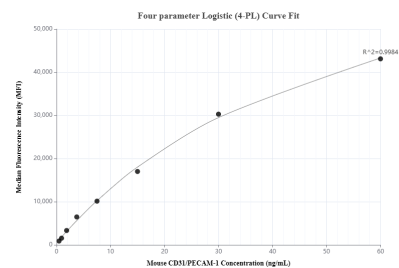
## Selected Validation Data



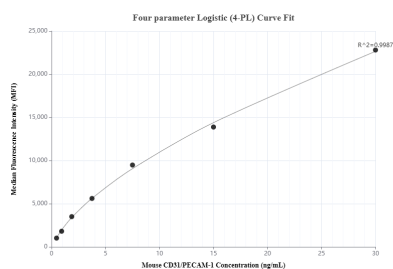
Sandwich ELISA standard curve of MP01441-2, Mouse CD31 Recombinant Matched Antibody Pair - PBS only. 84607-1-PBS was coated to a plate as the capture antibody and incubated with serial dilutions of standard Eg0846. 84607-3-PBS was HRP conjugated as the detection antibody. Range: 19.5-1250 pg/mL.



The mean CD31 concentration was determined to be 179.5 ng/mL in mouse lung tissue extract based on a 1.6 mg/mL extract load and 12.0 ng/mL in mouse heart tissue extract based on a 1.2 mg/mL extract load.



Cytometric bead array standard curve of MP01441-1, MOUSE CD31 Recombinant Matched Antibody Pair, PBS Only. Capture antibody: 84607-1-PBS. Detection antibody: 84607-2-PBS. Standard: Eg0846. Range: 0.469-60 ng/mL.



Cytometric bead array standard curve of MP01441-2, MOUSE CD31 Recombinant Matched Antibody Pair, PBS Only. Capture antibody: 84607-1-PBS. Detection antibody: 84607-3-PBS. Standard: Eg0846. Range: 0.469-30 ng/mL.