

For Research Use Only

# DPP4/CD26 Recombinant antibody, PBS Only (Capture)

Catalog Number: 84606-5-PBS



## Basic Information

Catalog Number:

84606-5-PBS

Size:

1 mg/ml

Source:

Rabbit

Isotype:

IgG

GenBank Accession Number:

BC013329

GeneID (NCBI):

1803

UNIPROT ID:

P27487

Full Name:

dipeptidyl-peptidase 4

Calculated MW:

88 kDa

Purification Method:

Protein A purification

CloneNo.:

242045D10

## Applications

Tested Applications:

Sandwich ELISA, Indirect ELISA, Sample test

Species Specificity:

human

## Background Information

### Storage

Storage:

Store at -80°C.

The product is shipped with ice packs. Upon receipt, store it immediately at -80°C

Storage Buffer:

PBS Only

For technical support and original validation data for this product please contact:

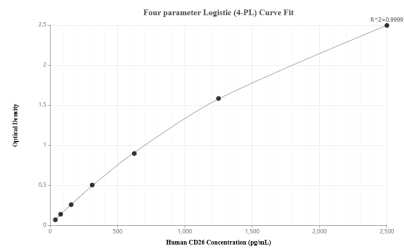
T: 4006900926

E: [Proteintech-CN@ptglab.com](mailto:Proteintech-CN@ptglab.com)

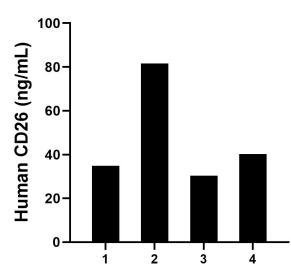
W: [ptgcn.com](http://ptgcn.com)

This product is exclusively available under Proteintech Group brand and is not available to purchase from any other manufacturer.

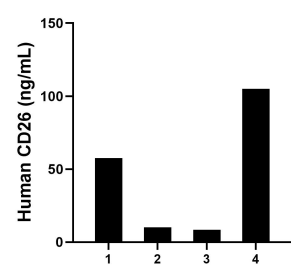
# Selected Validation Data



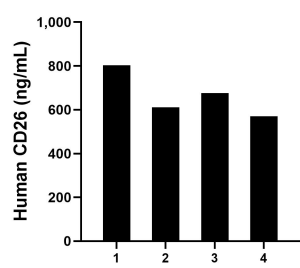
Sandwich ELISA standard curve of MP01439-3, Human DPP4/CD26 Recombinant Matched Antibody Pair - PBS only. 84606-5-PBS was coated to a plate as the capture antibody and incubated with serial dilutions of standard Eg0157. 84606-4-PBS was HRP conjugated as the detection antibody. Range: 39.1-2500 pg/mL



Saliva of four individual healthy human donors was measured. The human DPP4/CD26 concentration of detected samples was determined to be 46.73 ng/mL with a range of 30.36 - 81.55 ng/mL



Urine of four individual healthy human donors was measured. The human DPP4/CD26 concentration of detected samples was determined to be 45.25 ng/mL with a range of 8.4 - 104.93 ng/mL



Serum of four individual healthy human donors was measured. The human DPP4/CD26 concentration of detected samples was determined to be 665.25 ng/mL with a range of 570.16 - 803.43 ng/mL