

For Research Use Only

# TIM-1 Recombinant antibody, PBS Only

Catalog Number: 84600-5-PBS



## Basic Information

Catalog Number:

84600-5-PBS

Size:

1 mg/ml

Source:

Rabbit

Isotype:

IgG

GenBank Accession Number:

NM\_001173393.3

GeneID (NCBI):

26762

UNIPROT ID:

Q96D42

Full Name:

hepatitis A virus cellular receptor 1

Calculated MW:

39kDa

Observed MW:

100 kDa

Purification Method:

Protein A purification

CloneNo.:

242001D1

## Applications

Tested Applications:

WB, Indirect ELISA

Species Specificity:

human

## Background Information

TIM-1, also known as kidney injury molecule (KIM-1), was first identified as a marker of acute kidney injury. TIM-1 mRNA and protein dramatically increase after ischemic kidney injury while there are low levels in normal kidneys. In addition, TIM-1 is expressed on CD4+ T cells after activation and its expression was sustained preferentially in Th2 but not Th1 cells. However, TIM-1 is expressed on both Th1 and Th2 cells and TIM-1 blockade prolongs survival of fully MHC-mismatched cardiac transplants. TIM-4, expressed by macrophages, is the ligand for TIM-1, and TIM-1 - TIM-4 interactions regulate Th cell responses and modulate Th1/Th2 cytokine balance. Moreover, TIM-1 can regulate macrophage activation and alter the co-stimulatory properties of macrophages. (PMID: 20091883)

## Storage

Storage:

Store at -80°C.

The product is shipped with ice packs. Upon receipt, store it immediately at -80°C

Storage Buffer:

PBS Only

For technical support and original validation data for this product please contact:

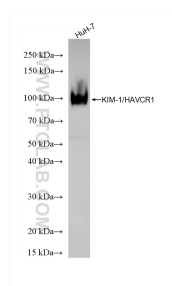
T: 4006900926

E: Proteintech-CN@ptglab.com

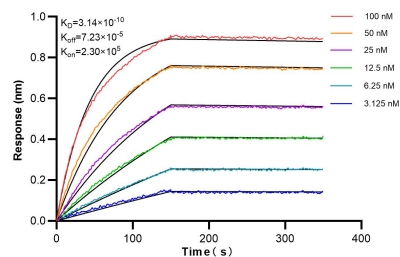
W: ptgcn.com

This product is exclusively available under Proteintech Group brand and is not available to purchase from any other manufacturer.

## Selected Validation Data



HuH-7 cells were subjected to SDS PAGE followed by western blot with 84600-5-RR (TIM-1 antibody) at dilution of 1:3000 incubated at room temperature for 1.5 hours. This data was developed using the same antibody clone with 84600-5-PBS in a different storage buffer formulation.



Biolayer interferometry (BLI) kinetic assays of 84600-5-RR against Human TIM-1 were performed. The affinity constant is 0.314 nM.