

For Research Use Only

TIM-1/KIM-1/HAVCR Recombinant antibody, PBS Only (Detector)

Catalog Number: 84600-2-PBS



Basic Information

Catalog Number:

84600-2-PBS

Size:

1 mg/ml

Source:

Rabbit

Isotype:

IgG

GenBank Accession Number:

NM_001173393.3

GeneID (NCBI):

26762

UNIPROT ID:

Q96D42

Full Name:

hepatitis A virus cellular receptor 1

Calculated MW:

39kDa

Purification Method:

Protein A purification

CloneNo.:

242001E8

Applications

Tested Applications:

Cytometric bead array, Sandwich ELISA, Indirect ELISA, Sample test

Species Specificity:

human

Background Information

Storage

Storage:

Store at -80°C.

The product is shipped with ice packs. Upon receipt, store it immediately at -80°C

Storage Buffer:

PBS Only

For technical support and original validation data for this product please contact:

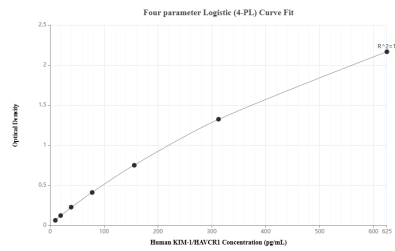
T: 4006900926

E: Proteintech-CN@ptglab.com

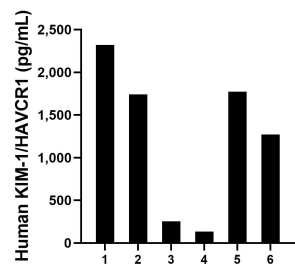
W: ptgcn.com

This product is exclusively available under Proteintech Group brand and is not available to purchase from any other manufacturer.

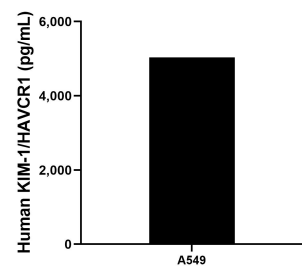
Selected Validation Data



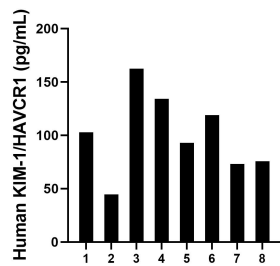
Sandwich ELISA standard curve of MP01449-1, Human KIM-1/HAVCR1 Recombinant Matched Antibody Pair - PBS only. 84600-1-PBS was coated to a plate as the capture antibody and incubated with serial dilutions of standard Eg1442. 84600-2-PBS was HRP conjugated as the detection antibody. Range: 9.77-625 pg/mL



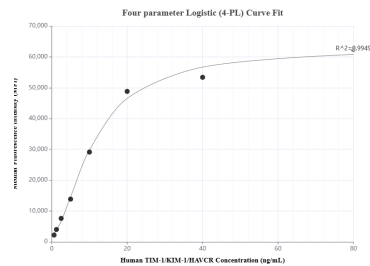
Urine of six individual healthy human donors was measured. The human KIM-1/HAVCR1 concentration of detected samples was determined to be 1,248.6 pg/mL with a range of 134.3-2,318.7 pg/mL



A549 were cultured in DMEM supplemented with 10% fetal bovine serum, 2.5 mM L-glutamine, 100 U/mL penicillin, and 100 μ g/mL streptomycin sulfate. An aliquot of the cell culture supernate was removed, assayed for human KIM-1/HAVCR1, and measured 5,031.4 pg/mL



Serum of eight individual healthy human donors was measured. The human KIM-1/HAVCR1 concentration of detected samples was determined to be 100.6 pg/mL with a range of 44.6-162.5 pg/mL



Cytometric bead array standard curve of MP01449-1, KIM-1/HAVCR1 Recombinant Matched Antibody Pair, PBS Only. Capture antibody: 84600-1-PBS. Detection antibody: 84600-2-PBS. Standard: Eg1442. Range: 0.625-80 ng/mL