

For Research Use Only

CD68 Recombinant antibody, PBS Only (Capture/Detector)

Catalog Number: 84596-3-PBS



Basic Information

Catalog Number:

84596-3-PBS

Size:

1 mg/ml

Source:

Rabbit

Isotype:

IgG

GenBank Accession Number:

BC015557

GeneID (NCBI):

968

UNIPROT ID:

P34810

Full Name:

CD68 molecule

Calculated MW:

37 kDa

Purification Method:

Protein A purification

CloneNo.:

241810G1

Applications

Tested Applications:

Cytometric bead array, Sandwich ELISA, Indirect ELISA,
Sample test

Species Specificity:

human

Background Information

Storage

Storage:

Store at -80°C.

The product is shipped with ice packs. Upon receipt, store it immediately at -80°C

Storage Buffer:

PBS Only

For technical support and original validation data for this product please contact:

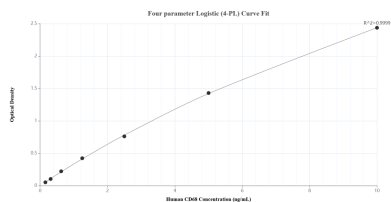
T: 4006900926

E: Proteintech-CN@ptglab.com

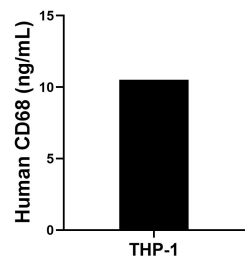
W: ptgcn.com

This product is exclusively available under Proteintech Group brand and is not available to purchase from any other manufacturer.

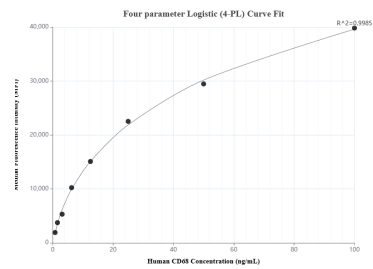
Selected Validation Data



Sandwich ELISA standard curve of MP01429-3, Human CD68 Recombinant Matched Antibody Pair - PBS only. 84596-3-PBS was coated to a plate as the capture antibody and incubated with serial dilutions of standard Eg2061. 84596-5-PBS was HRP conjugated as the detection antibody. Range: 0.156-10 ng/mL



The mean CD68 concentration was determined to be 10.53 ng/mL in THP-1 cell extract based on a 4.40 mg/mL extract load.



Cytometric bead array standard curve of MP01429-1, CD68 Recombinant Matched Antibody Pair, PBS Only. Capture antibody: 84596-1-PBS. Detection antibody: 84596-3-PBS. Standard: Eg2061. Range: 0.781-100 ng/mL