

For Research Use Only

IL-15RA Recombinant antibody, PBS Only

Catalog Number: 84582-8-PBS



Basic Information

Catalog Number: 84582-8-PBS	GenBank Accession Number: BC107777	Purification Method: Protein A purification
Concentration: 1 mg/ml	GeneID (NCBI): 3601	CloneNo.: 242689D6
Source: Rabbit	UNIPROT ID: Q13261	
Isotype: IgG	Full Name: interleukin 15 receptor, alpha	
	Calculated MW: 231 aa, 24 kDa	
	Observed MW: 50 kDa	

Applications

Tested Applications:
WB, Indirect ELISA

Species Specificity:
human

Background Information

Interleukin-15 (IL-15) is a pleiotropic cytokine that plays an important role in both innate and adaptive immunity. IL-15 is mainly produced by activated monocytes, macrophages and dendritic cells, and is structurally similar to IL-2 (PMID: 8178155; 12401478). These two cytokines share the same IL-2/15R β and common γ -chain receptor subunits. In addition, IL-2 and IL-15 have their own private α -chain receptor subunit, IL-2R α and IL-15R α , respectively (PMID: 7641685). The IL-15R α chain is expressed by many cell types including monocytes, DCs, NK, T cells and fibroblasts. Several isoforms of IL-15R α exist and are generated either by alternative splicing or by proteolytic cleavage (PMID: 10480910; 15265897). The calculated molecular weight of full-length IL-15R α is 28 kDa, IL-15R α can be glycosylated, and larger apparent molecular weights have been reported by some researches (PMID: 10480910; 15976182; 15671076; 17912462).

Storage

Storage:
Store at -80°C.
The product is shipped with ice packs. Upon receipt, store it immediately at -80°C

Storage Buffer:
PBS only, pH7.3

For technical support and original validation data for this product please contact:

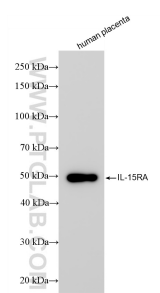
T: 4006900926

E: Proteintech-CN@ptglab.com

W: ptgcn.com

This product is exclusively available under Proteintech Group brand and is not available to purchase from any other manufacturer.

Selected Validation Data



Human placenta tissue was subjected to SDS PAGE followed by western blot with 84582-8-RR (IL15RA antibody) at dilution of 1:5000 incubated at room temperature for 1.5 hours. This data was developed using the same antibody clone with 84582-8-PBS in a different storage buffer formulation.