

For Research Use Only

TRAF2 Recombinant antibody, PBS Only (Detector)

Catalog Number: 84581-1-PBS



Basic Information

Catalog Number:	84581-1-PBS	GenBank Accession Number:	BC032410	Purification Method:	Protein A purification
Size:	1 mg/ml	GeneID (NCBI):	7186	CloneNo.:	241899E6
Source:	Rabbit	UNIPROT ID:	Q12933		
Isotype:	IgG	Full Name:	TNF receptor-associated factor 2		
Immunogen Catalog Number:	AG25387	Calculated MW:	56 kDa		

Applications

Tested Applications:
Cytometric bead array, Sandwich ELISA, Indirect ELISA,
Sample test

Species Specificity:
human

Background Information

Storage

Storage:
Store at -80°C.
The product is shipped with ice packs. Upon receipt, store it immediately at -80°C

Storage Buffer:
PBS Only

For technical support and original validation data for this product please contact:

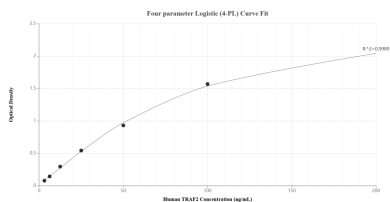
T: 4006900926

E: Proteintech-CN@ptglab.com

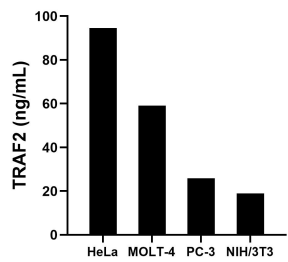
W: ptgcn.com

This product is exclusively available under Proteintech Group brand and is not available to purchase from any other manufacturer.

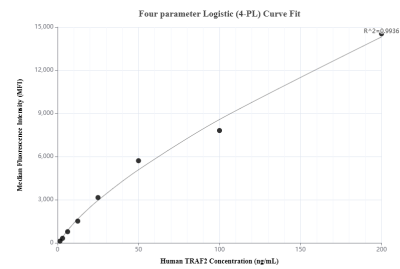
Selected Validation Data



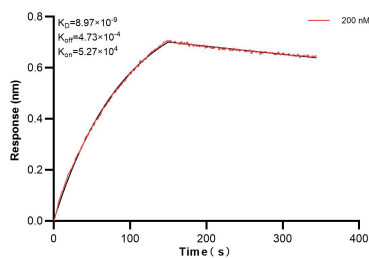
Sandwich ELISA standard curve of MP01404-2, Human TRAF2 Recombinant Matched Antibody Pair - PBS only. 84581-3-PBS was coated to a plate as the capture antibody and incubated with serial dilutions of standard Ag25387. 84581-1-PBS was HRP conjugated as the detection antibody. Range: 3.13-200 ng/mL.



The mean TRAF2 concentration was determined to be 94.50 ng/mL in HeLa cell extract based on a 1.50 mg/mL extract load, 59.04 ng/mL in MOLT-4 cell extract based on a 1.20 mg/mL extract load, 25.97 ng/mL in PC-3 cell extract based on a 2.00 mg/mL extract load and 18.85 ng/mL in NIH/3T3 cell extract based on a 1.50 mg/mL extract load.



Cytometric bead array standard curve of MP01404-1, TRAF2 Recombinant Matched Antibody Pair, PBS Only. Capture antibody: 84581-2-PBS. Detection antibody: 84581-1-PBS. Standard: Ag25387. Range: 1.563-200 ng/mL.



Bioluminescence resonance energy transfer (BRET) kinetic assay of 84581-1-PBS against Human TRAF2 was performed. The affinity constant is 8.97 nM.