

For Research Use Only

WNT3A Recombinant antibody, PBS Only (Capture/Detector)

Catalog Number: 84577-3-PBS



Basic Information

Catalog Number:

84577-3-PBS

Size:

1 mg/ml

Source:

Rabbit

Isotype:

IgG

Immunogen Catalog Number:

AG25051

GenBank Accession Number:

BC103921

GeneID (NCBI):

89780

UNIPROT ID:

P56704

Full Name:

wingless-type MMTV integration site family, member 3A

Calculated MW:

352 aa, 39 kDa

Purification Method:

Protein A purification

CloneNo.:

241993G6

Applications

Tested Applications:

Cytometric bead array, Sandwich ELISA, Indirect ELISA, Sample test

Species Specificity:

human

Background Information

Storage

Storage:

Store at -80°C.

The product is shipped with ice packs. Upon receipt, store it immediately at -80°C

Storage Buffer:

PBS Only

For technical support and original validation data for this product please contact:

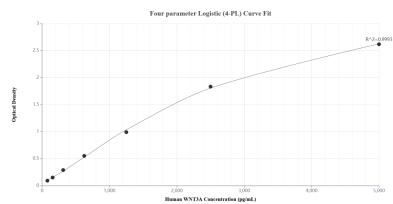
T: 4006900926

E: Proteintech-CN@ptglab.com

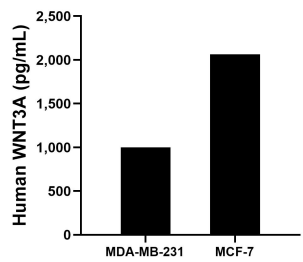
W: ptgcn.com

This product is exclusively available under Proteintech Group brand and is not available to purchase from any other manufacturer.

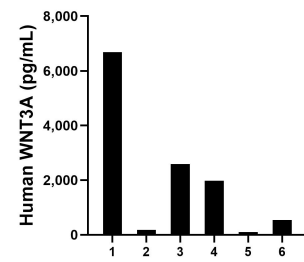
Selected Validation Data



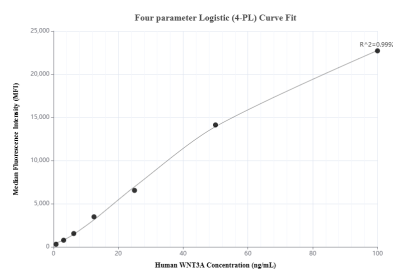
Sandwich ELISA standard curve of MP01423-3, Human WNT3A Recombinant Matched Antibody Pair - PBS only. 84577-5-PBS was coated to a plate as the capture antibody and incubated with serial dilutions of standard Ag25051. 84577-3-PBS was HRP conjugated as the detection antibody. Range: 78.1-5000 pg/mL.



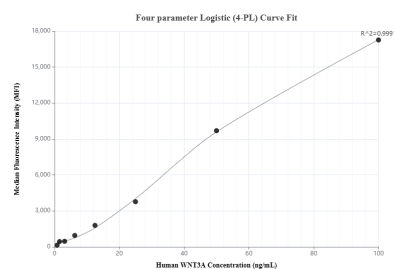
The mean WNT3A concentration was determined to be 999.1 pg/mL in MDA-MB-231 cell extract based on a 1.2 mg/mL extract load and 2,063.4 pg/mL in MCF-7 cell extract based on a 1.2 mg/mL extract load.



Serum of six individual healthy human donors was measured. The WNT3A concentration of detected samples was determined to be 2,012.8 pg/mL with a range of 101.5-6,680.8 pg/mL.



Cytometric bead array standard curve of MP01423-1, WNT3A Recombinant Matched Antibody Pair, PBS Only. Capture antibody: 84577-3-PBS. Detection antibody: 84577-1-PBS. Standard: Ag25051. Range: 0.781-100 ng/mL.



Cytometric bead array standard curve of MP01423-2, WNT3A Recombinant Matched Antibody Pair, PBS Only. Capture antibody: 84577-3-PBS. Detection antibody: 84577-2-PBS. Standard: Ag25051. Range: 0.781-100 ng/mL.