

For Research Use Only

# IL31 Recombinant antibody, PBS Only (Detector)

Catalog Number: 84575-3-PBS



## Basic Information

Catalog Number:

84575-3-PBS

Size:

1 mg/ml

Source:

Rabbit

Isotype:

IgG

GenBank Accession Number:

BC132998

GeneID (NCBI):

386653

UNIPROT ID:

Q6EBC2

Full Name:

interleukin 31

Calculated MW:

164 aa, 18 kDa

Purification Method:

Protein A purification

CloneNo.:

241892G4

## Applications

Tested Applications:

Cytometric bead array, Sandwich ELISA, Indirect ELISA, Sample test

Species Specificity:

human

## Background Information

### Storage

Storage:

Store at -80°C.

The product is shipped with ice packs. Upon receipt, store it immediately at -80°C

Storage Buffer:

PBS Only

For technical support and original validation data for this product please contact:

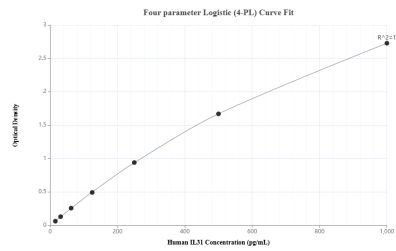
T: 4006900926

E: [Proteintech-CN@ptglab.com](mailto:Proteintech-CN@ptglab.com)

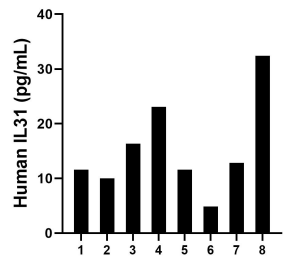
W: [ptgcn.com](http://ptgcn.com)

This product is exclusively available under Proteintech Group brand and is not available to purchase from any other manufacturer.

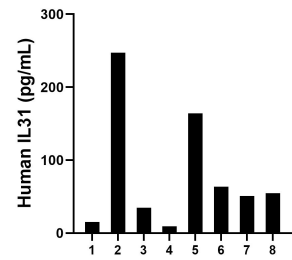
Selected Validation Data



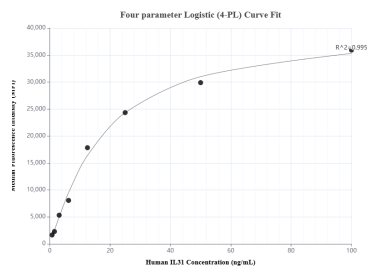
Sandwich ELISA standard curve of MP01421-3, Human IL31 Recombinant Matched Antibody Pair - PBS only. 84575-4-PBS was coated to a plate as the capture antibody and incubated with serial dilutions of standard Eg2222. 84575-3-PBS was HRP conjugated as the detection antibody. Range: 15.6-1000 pg/mL



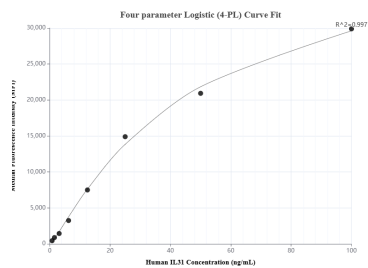
Plasma of eight individual healthy human donors was measured. The human IL31 concentration of detected samples was determined to be 15.3 pg/mL with a range of 4.8 - 32.4 pg/mL.



Serum of eight individual healthy human donors was measured. The human IL31 concentration of detected samples was determined to be 80.0 pg/mL with a range of 9.3 - 247.5 pg/mL.



Cytometric bead array standard curve of MP01421-1, IL31 Recombinant Matched Antibody Pair, PBS Only. Capture antibody: 84575-1-PBS. Detection antibody: 84575-3-PBS. Standard: Eg2222. Range: 0.781-100 ng/mL



Cytometric bead array standard curve of MP01421-2, IL31 Recombinant Matched Antibody Pair, PBS Only. Capture antibody: 84575-2-PBS. Detection antibody: 84575-3-PBS. Standard: Eg2222. Range: 0.781-100 ng/mL