

For Research Use Only

Mouse PD-L2/B7-DC Recombinant antibody, PBS Only (Detector)

Catalog Number: 84573-4-PBS



Basic Information

Catalog Number:

84573-4-PBS

Size:

1 mg/ml

Source:

Rabbit

Isotype:

IgG

GenBank Accession Number:

NM_021396.2

GeneID (NCBI):

58205

UNIPROT ID:

Q9WUL5

Full Name:

programmed cell death 1 ligand 2

Calculated MW:

28kDa

Purification Method:

Protein A purification

CloneNo.:

241728D6

Applications

Tested Applications:

Sandwich ELISA, Indirect ELISA, Sample test

Species Specificity:

mouse

Background Information

Storage

Storage:

Store at -80°C.

The product is shipped with ice packs. Upon receipt, store it immediately at -80°C

Storage Buffer:

PBS Only

For technical support and original validation data for this product please contact:

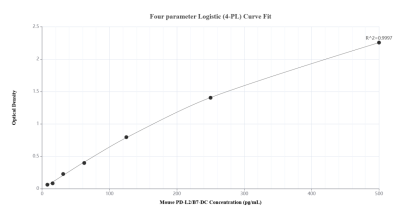
T: 4006900926

E: Proteintech-CN@ptglab.com

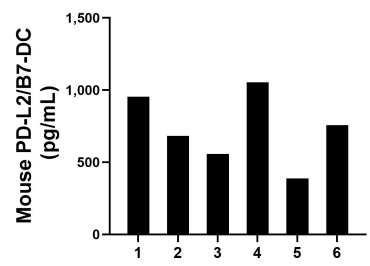
W: ptgcn.com

This product is exclusively available under Proteintech Group brand and is not available to purchase from any other manufacturer.

Selected Validation Data



Sandwich ELISA standard curve of MP01413-3, Mouse PD-L2/B7-DC Recombinant Matched Antibody Pair - PBS only. 84573-5-PBS was coated to a plate as the capture antibody and incubated with serial dilutions of standard Eg1842. 84573-4-PBS was HRP conjugated as the detection antibody. Range: 15.6-500 pg/mL



Serum of six mice was measured. The PD-L2/B7-DC concentration of detected samples was determined to be 731.7 pg/mL with a range of 387.7-1,052.8 pg/mL