

For Research Use Only

# CTRL Recombinant antibody

Catalog Number: 84572-4-RR



## Basic Information

Catalog Number:

84572-4-RR

Size:

1000 µg/ml

Source:

Rabbit

Isotype:

IgG

GenBank Accession Number:

BC063475

GeneID (NCBI):

1506

UNIPROT ID:

P40313

Full Name:

chymotrypsin-like

Calculated MW:

28 kDa

Observed MW:

25-28 kDa

Purification Method:

Protein A purification

CloneNo.:

241858D7

Recommended Dilutions:

WB 1:5000-1:50000

## Applications

Tested Applications:

WB, ELISA

Species Specificity:

human, mouse, rat

Positive Controls:

WB : mouse stomach tissue, mouse pancreas tissue, rat pancreas tissue

## Background Information

CTRL(Chymotrypsin-like protease) is also named as CTRL1 and belongs to the peptidase S1 family. The CTRL1 enzyme is active over a broad pH range. It expresses in pancreas and presence in intestinal fluid after stimulation of pancreatic secretion as a digestive enzyme(PMID:9065485). This gene encode a protein of 264 amino acid and the protein has a signal peptide of 18 amino acid and a propeptide of 15 amino acid.

## Storage

Storage:

Store at -20°C. Stable for one year after shipment.

Storage Buffer:

PBS with 0.02% sodium azide and 50% glycerol pH 7.3.

Aliquoting is unnecessary for -20°C storage

For technical support and original validation data for this product please contact:

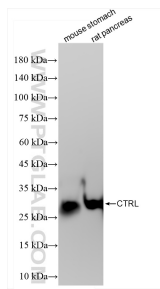
T: 4006900926

E: Proteintech-CN@ptglab.com

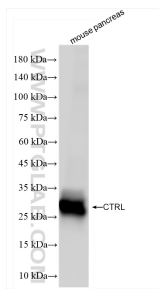
W: ptgcn.com

This product is exclusively available under Proteintech Group brand and is not available to purchase from any other manufacturer.

## Selected Validation Data



Various lysates were subjected to SDS PAGE followed by western blot with 84572-4-RR (CTRL antibody) at dilution of 1:20000 incubated at room temperature for 1.5 hours.



mouse pancreas tissue were subjected to SDS PAGE followed by western blot with 84572-4-RR (CTRL antibody) at dilution of 1:20000 incubated at room temperature for 1.5 hours.