

For Research Use Only

RGNEF Recombinant antibody, PBS Only (Capture)

Catalog Number: 84570-2-PBS



Basic Information

Catalog Number: 84570-2-PBS	GenBank Accession Number: BC012946	Purification Method: Protein A purification
Size: 1 mg/ml	GeneID (NCBI): 64283	CloneNo.: 241975E4
Source: Rabbit	UNIPROT ID: Q8N1W1	
Isotype: IgG	Full Name: Rho-guanine nucleotide exchange factor	
Immunogen Catalog Number: AG10915	Calculated MW: 192 kDa	
	Observed MW: 192 kDa	

Applications

Tested Applications:
WB, Cytometric bead array, Indirect ELISA

Species Specificity:
human

Background Information

ARHGEF28, also known as RGNEF or p190RhoGEF, is a 190 kDa RNA binding protein (RBP) that contains a Dbp/PH domain capable of RhoA activation. ARHGEF28 interacts with low molecular weight neurofilament mRNA and may be involved in the formation of amyotrophic lateral sclerosis neurofilament aggregates.

Storage

Storage:
Store at -80°C.
The product is shipped with ice packs. Upon receipt, store it immediately at -80°C

Storage Buffer:
PBS Only

For technical support and original validation data for this product please contact:

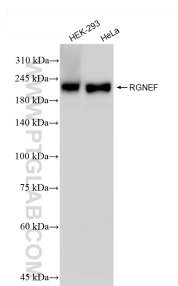
T: 4006900926

E: Proteintech-CN@ptglab.com

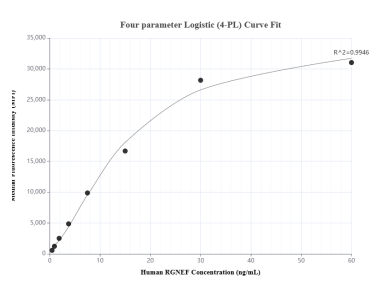
W: ptgcn.com

This product is exclusively available under Proteintech Group brand and is not available to purchase from any other manufacturer.

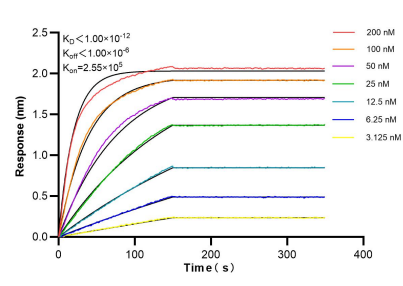
Selected Validation Data



Various lysates were subjected to SDS PAGE followed by western blot with 84570-2-RR (RGNEF antibody) at dilution of 1:4000 incubated at room temperature for 1.5 hours. This data was developed using the same antibody clone with 84570-2-PBS in a different storage buffer formulation.



Cytometric bead array standard curve of MP01414-1, RGNEF Recombinant Matched Antibody Pair, PBS Only. Capture antibody: 84570-2-PBS. Detection antibody: 84570-1-PBS. Standard: Ag10915. Range: 0.469-60 ng/mL.



Biolayer interferometry (BLI) kinetic assays of 84570-2-RR against Human RGNEF were performed. The affinity constant is below 1 pM.