

For Research Use Only

Cortactin Recombinant antibody, PBS Only (Capture)

Catalog Number: 84569-2-PBS



Basic Information

Catalog Number:

84569-2-PBS

Size:

1 mg/ml

Source:

Rabbit

Isotype:

IgG

Immunogen Catalog Number:

AG1940

GenBank Accession Number:

BC008799

GeneID (NCBI):

2017

UNIPROT ID:

Q14247

Full Name:

cortactin

Calculated MW:

57 kDa

Purification Method:

Protein A purification

CloneNo.:

241987B4

Applications

Tested Applications:

Cytometric bead array, Sandwich ELISA, Indirect ELISA,
Sample test

Species Specificity:

human

Background Information

Storage

Storage:

Store at -80°C.

The product is shipped with ice packs. Upon receipt, store it immediately at -80°C

Storage Buffer:

PBS Only

For technical support and original validation data for this product please contact:

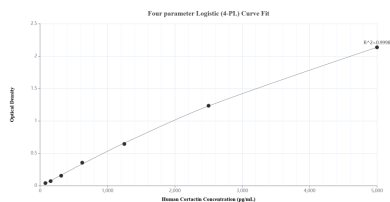
T: 4006900926

E: Proteintech-CN@ptglab.com

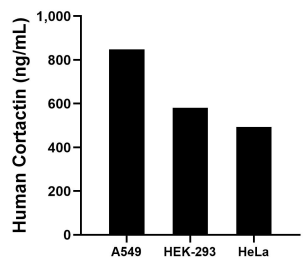
W: ptgcn.com

This product is exclusively available under Proteintech Group brand and is not available to purchase from any other manufacturer.

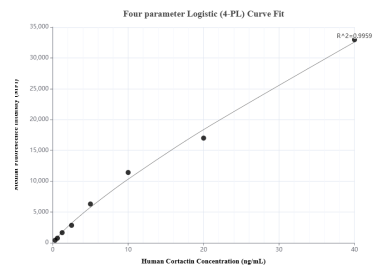
Selected Validation Data



Sandwich ELISA standard curve of MP01412-2, Human Cortactin Recombinant Matched Antibody Pair - PBS only. 84569-2-PBS was coated to a plate as the capture antibody and incubated with serial dilutions of standard Ag1940. 84569-1-PBS was HRP conjugated as the detection antibody. Range: 78.1-5000 pg/mL.



The mean Cortactin concentration was determined to be 848.3 ng/mL in A549 cell extract based on a 2.3 mg/mL extract load, 581.1 ng/mL in HEK-293 cell extract based on a 3.3 mg/mL extract load and 493.0 ng/mL in HeLa cell extract based on a 1.0 mg/mL extract load.



Cytometric bead array standard curve of MP01412-2, Cortactin Recombinant Matched Antibody Pair, PBS Only. Capture antibody: 84569-2-PBS. Detection antibody: 84569-1-PBS. Standard: Ag1940. Range: 0.313-40 ng/mL.