

For Research Use Only

# ER Recombinant antibody, PBS Only (Capture)

Catalog Number: 84564-12-PBS



## Basic Information

Catalog Number:

84564-12-PBS

Concentration:

1 mg/ml

Source:

Rabbit

Isotype:

IgG

Immunogen Catalog Number:

EG2234

GenBank Accession Number:

BC128573

GeneID (NCBI):

2099

UNIPROT ID:

P03372

Full Name:

estrogen receptor 1

Calculated MW:

595 aa, 66 kDa

Purification Method:

Protein A purification

CloneNo.:

250324G6

## Applications

Tested Applications:

Sandwich ELISA, Indirect ELISA, Sample test

Species Specificity:

human

## Background Information

### Storage

Storage:

Store at -80°C.

The product is shipped with ice packs. Upon receipt, store it immediately at -80°C

Storage Buffer:

PBS only, pH7.3

For technical support and original validation data for this product please contact:

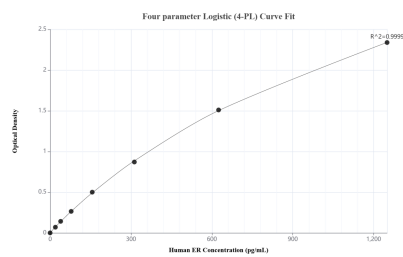
T: 4006900926

E: Proteintech-CN@ptglab.com

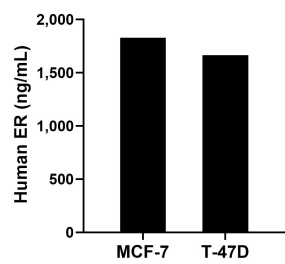
W: ptgcn.com

This product is exclusively available under Proteintech Group brand and is not available to purchase from any other manufacturer.

## Selected Validation Data



Sandwich ELISA standard curve of MP01406-2, Human ER Recombinant Matched Antibody Pair - PBS only. 84564-12-PBS was coated to a plate as the capture antibody and incubated with serial dilutions of standard Eg2234. 84564-8-PBS was HRP conjugated as the detection antibody. Range: 19.5-1250 pg/mL



The mean ER concentration was determined to be 1,828.0 pg/mL in MCF-7 cell extract based on a 1.3 mg/mL extract load and 1,662.9 pg/mL in T-47D cell extract based on a 1.2 mg/mL extract load.