

For Research Use Only

HPSE Recombinant antibody

Catalog Number: 84562-1-RR



Basic Information

| | | |
|--------------------------------------|--|---|
| Catalog Number: 84562-1-RR | GenBank Accession Number: BC051321 | Purification Method: Protein A purification |
| Size: 1000 ug/ml | GeneID (NCBI): 10855 | CloneNo.: 241651E3 |
| Source: Rabbit | UNIPROT ID: Q9Y251 | Recommended Dilutions: WB 1:5000-1:50000 IHC 1:250-1:1000 |
| Isotype: IgG | Full Name: heparanase | |
| Immunogen Catalog Number: AG21479 | Calculated MW: 543 aa, 61 kDa Observed MW: 50 kDa | |

Applications

| | |
|--|--|
| Tested Applications: WB, IHC, FC (Intra), ELISA | Positive Controls: |
| Species Specificity: human | WB : HeLa cells, IHC : human placenta tissue, |
| Note-IHC: suggested antigen retrieval with TE buffer pH 9.0; (*) Alternatively, antigen retrieval may be performed with citrate buffer pH 6.0 | |

Background Information

HPSE(Heparanase) is also named as HEP, HPA, HPA1, HPR1, HPSE1, HSE1 and belongs to the glycosyl hydrolase 79 family. It is an endoglycosidase that cleaves heparan sulfate proteoglycans (HSPGs) into heparan sulfate side chains and core proteoglycans. HPSE is essential in the disassembly of the extracellular matrix (ECM) by invading cells. It has 3 isoforms produced by alternative splicing with the molecular weight of 61 kDa, 55 kDa and 53 kDa. The full length protein has six glycosylation sites. The cleavage of the 65 kDa form leads to the generation of a linker peptide, and 8 kDa and 50 kDa products. The active form, the 8/50 kDa heterodimer, is resistant to degradation and glycosylation of the 50 kDa subunit appears to be essential for its solubility.

Storage

Storage:
Store at -20°C. Stable for one year after shipment.
Storage Buffer:
PBS with 0.02% sodium azide and 50% glycerol pH 7.3.
Aliquoting is unnecessary for -20°C storage

For technical support and original validation data for this product please contact:

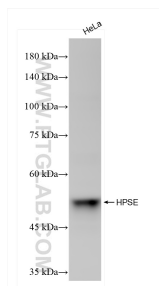
T: 4006900926

E: Proteintech-CN@ptglab.com

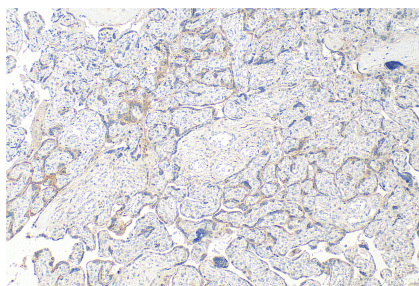
W: ptgcn.com

This product is exclusively available under Proteintech Group brand and is not available to purchase from any other manufacturer.

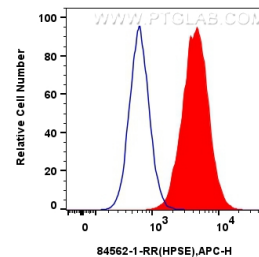
Selected Validation Data



HeLa cells were subjected to SDS PAGE followed by western blot with 84562-1-RR (HPSE antibody) at dilution of 1:10000 incubated at room temperature for 1.5 hours.



Immunohistochemical analysis of paraffin-embedded human placenta tissue slide using 84562-1-RR (HPSE antibody) at dilution of 1:500 (under 10x lens). Heat mediated antigen retrieval with Tris-EDTA buffer (pH 9.0).



1x10⁶ HepG2 cells were intracellularly stained with 0.25 ug HPSE Recombinant Antibody (84562-1-RR, Clone:241651E3) and Multi-rAb CoraLite[®] Plus 647-Goat Anti-Rabbit Recombinant Secondary Antibody (H+L) (RGAR005)(red), or 0.25 ug Rabbit IgG Isotype Control Recombinant Antibody (98136-1-RR, Clone: 240953C9) (blue). Cells were fixed with 4% PFA and permeabilized with Flow Cytometry Perm Buffer (PF00011-C).