

For Research Use Only

# SCYL1 Recombinant antibody

Catalog Number: 84561-2-RR



## Basic Information

Catalog Number:

84561-2-RR

Size:

1000 µg/ml

Source:

Rabbit

Isotype:

IgG

Immunogen Catalog Number:

AG35298

GenBank Accession Number:

NM\_020680

GeneID (NCBI):

57410

UNIPROT ID:

Q96KG9

Full Name:

SCY1-like 1 (S. cerevisiae)

Calculated MW:

90 kDa

Observed MW:

110 kDa

Purification Method:

Protein A purification

CloneNo.:

241635E10

Recommended Dilutions:

WB 1:5000-1:50000

## Applications

Tested Applications:

WB, ELISA

Species Specificity:

human, mouse

Positive Controls:

WB : HEK-293T cells, HeLa cells, K-562 cells, NIH/3T3 cells

## Background Information

### Storage

Storage:

Store at -20°C. Stable for one year after shipment.

Storage Buffer:

PBS with 0.02% sodium azide and 50% glycerol pH 7.3.

Aliquoting is unnecessary for -20°C storage

For technical support and original validation data for this product please contact:

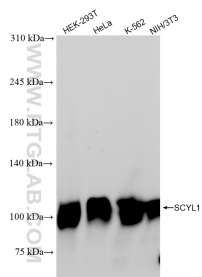
T: 4006900926

E: [Proteintech-CN@ptglab.com](mailto:Proteintech-CN@ptglab.com)

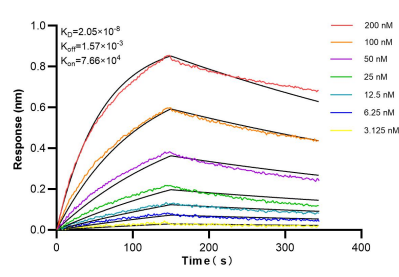
W: [ptgcn.com](http://ptgcn.com)

This product is exclusively available under Proteintech Group brand and is not available to purchase from any other manufacturer.

## Selected Validation Data



Various lysates were subjected to SDS PAGE followed by western blot with 84561-2-RR (SCYL1 antibody) at dilution of 1:10000 incubated at room temperature for 1.5 hours.



Biolayer interferometry (BLI) kinetic assays of 84561-2-RR against Human SCYL1 were performed. The affinity constant is 20.5 nM.