

For Research Use Only

# SCYL1 Recombinant antibody, PBS Only

Catalog Number: 84561-2-PBS



## Basic Information

Catalog Number:

84561-2-PBS

Size:

1 mg/ml

Source:

Rabbit

Isotype:

IgG

Immunogen Catalog Number:

AG35298

GenBank Accession Number:

NM\_020680

GeneID (NCBI):

57410

UNIPROT ID:

Q96KG9

Full Name:

SCY1-like 1 (S. cerevisiae)

Calculated MW:

90 kDa

Observed MW:

110 kDa

Purification Method:

Protein A purification

CloneNo.:

241635E10

## Applications

Tested Applications:

WB, Indirect ELISA

Species Specificity:

human, mouse

## Background Information

### Storage

Storage:

Store at -80°C.

The product is shipped with ice packs. Upon receipt, store it immediately at -80°C

Storage Buffer:

PBS Only

For technical support and original validation data for this product please contact:

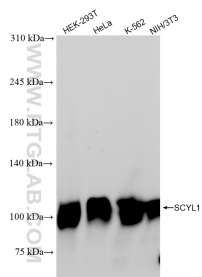
T: 4006900926

E: Proteintech-CN@ptglab.com

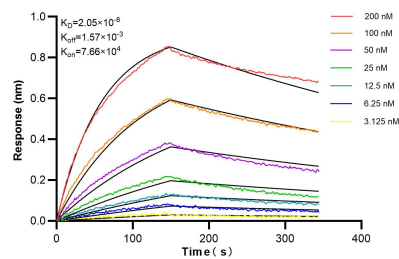
W: ptgcn.com

This product is exclusively available under Proteintech Group brand and is not available to purchase from any other manufacturer.

## Selected Validation Data



Various lysates were subjected to SDS PAGE followed by western blot with 84561-2-RR (SCYL1 antibody) at dilution of 1:10000 incubated at room temperature for 1.5 hours. This data was developed using the same antibody clone with 84561-2-PBS in a different storage buffer formulation.



Biolayer interferometry (BLI) kinetic assays of 84561-2-RR against Human SCYL1 were performed. The affinity constant is 20.5 nM.