

For Research Use Only

SCYL1 Recombinant antibody

Catalog Number: 84561-1-RR



Basic Information

Catalog Number:

84561-1-RR

Size:

900 µg/ml

Source:

Rabbit

Isotype:

IgG

Immunogen Catalog Number:

AG35298

GenBank Accession Number:

NM_020680

GeneID (NCBI):

57410

UNIPROT ID:

Q96KG9

Full Name:

SCY1-like 1 (S. cerevisiae)

Calculated MW:

90 kDa

Observed MW:

110 kDa

Purification Method:

Protein A purification

CloneNo.:

241635D12

Recommended Dilutions:

WB 1:2000-1:18000

Applications

Tested Applications:

WB, ELISA

Species Specificity:

human, mouse

Positive Controls:

WB : mouse testis tissue, mouse liver tissue, NIH/3T3 cells

Background Information

Storage

Storage:

Store at -20°C. Stable for one year after shipment.

Storage Buffer:

PBS with 0.02% sodium azide and 50% glycerol pH 7.3.

Aliquoting is unnecessary for -20°C storage

For technical support and original validation data for this product please contact:

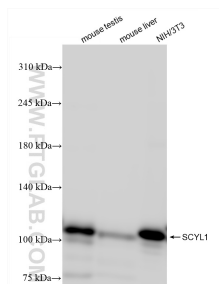
T: 4006900926

E: Proteintech-CN@ptglab.com

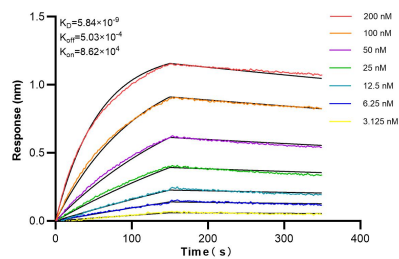
W: ptgcn.com

This product is exclusively available under Proteintech Group brand and is not available to purchase from any other manufacturer.

Selected Validation Data



Various lysates were subjected to SDS PAGE followed by western blot with 84561-1-RR (SCYL1 antibody) at dilution of 1:9000 incubated at room temperature for 1.5 hours.



Biolayer interferometry (BLI) kinetic assays of 84561-1-RR against Human SCYL1 were performed. The affinity constant is below 5.84 nM.