

For Research Use Only

Phospho-MEK2 (Thr394) Recombinant antibody, PBS Only

Catalog Number: 84556-1-PBS



Basic Information

Catalog Number:

84556-1-PBS

Size:

1 mg/ml

Source:

Rabbit

Isotype:

IgG

GenBank Accession Number:

BC018645

GeneID (NCBI):

5605

UNIPROT ID:

P36507

Full Name:

mitogen-activated protein kinase
kinase 2

Calculated MW:

44 kDa

Observed MW:

44 kDa

Purification Method:

Protein A purification

CloneNo.:

241669E6

Applications

Tested Applications:

WB, Indirect ELISA

Species Specificity:

human, mouse

Background Information

MEK2 (MAPK/ERK kinase 2) is also named as MAP2K2, MKK2, PRKMK2 and belongs to the MAP kinase kinase subfamily. MAPKK is itself dependent on Ser/Thr phosphorylation for activity catalyzed by MAP kinase kinase kinases (RAF or MEKK1). MEK1 and MEK2 are closely related, dual-specificity tyrosine/threonine protein kinases found in the Ras/Raf/MEK/ERK mitogen-activated protein kinase (MAPK) signaling pathway.

Storage

Storage:

Store at -80°C.

The product is shipped with ice packs. Upon receipt, store it immediately at -80°C

Storage Buffer:

PBS Only

For technical support and original validation data for this product please contact:

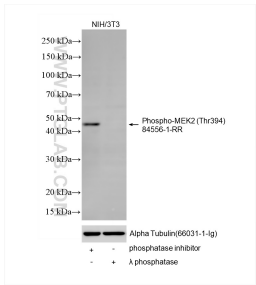
T: 4006900926

E: Proteintech-CN@ptglab.com

W: ptgcn.com

This product is exclusively available under Proteintech Group brand and is not available to purchase from any other manufacturer.

Selected Validation Data



Non-treated NIH/3T3 cells, phosphatase inhibitor treated NIH/3T3 cells and λ phosphatase treated NIH/3T3 cells were subjected to SDS PAGE followed by western blot with 84556-1-RR (Phospho-MEK2 (Thr394) antibody) at dilution of 1:1000 incubated at room temperature for 1.5 hours. The membrane was stripped and re-blotted with Alpha Tubulin (66031-1-Ig) antibody as a loading control. This data was developed using the same antibody clone with 84556-1-

