

For Research Use Only

ANP32CP Recombinant antibody

Catalog Number: 84553-1-RR



Basic Information

Catalog Number:

84553-1-RR

Size:

1000 µg/ml

Source:

Rabbit

Isotype:

IgG

Immunogen Catalog Number:

AG35293

GenBank Accession Number:

NM_012403.1

GeneID (NCBI):

23520

UNIPROT ID:

O43423

Full Name:

acidic (leucine-rich) nuclear phosphoprotein 32 family, member C

Calculated MW:

27 kDa

Observed MW:

27-30 kDa

Purification Method:

Protein A purification

CloneNo.:

241562D12

Recommended Dilutions:

WB 1:5000-1:50000

IF/ICC 1:125-1:500

Applications

Tested Applications:

WB, IF/ICC, ELISA

Species Specificity:

human

Positive Controls:

WB : HUVEC cells, BxPC-3 cells, LNCaP cells, MCF-7 cells, DU 145 cells

IF/ICC : LNCaP cells,

Background Information

ANP32CP (acidic nuclear phosphoprotein 32 family member C, pseudogene), also known as PP32R1. It is expected to be located in nucleus and perinuclear region of cytoplasm. Expressed in activated stem cells, such as mobilized CD34+ cells and cord blood CD34+ cells, but not in resting bone marrow CD34+ cells. Expressed in a variety of neoplastic cell lines, mainly in prostatic adenocarcinoma cell lines. Not expressed in normal prostatic tissue (PMID: 10086381). The calculated molecular weight of ANP32CP is 27 kDa. The protein could be the product of a pseudogene. Gene encoding ANP32CP is intronless suggesting that is pseudogene generated by retrotransposition.

Storage

Storage:

Store at -20°C. Stable for one year after shipment.

Storage Buffer:

PBS with 0.02% sodium azide and 50% glycerol pH 7.3.

Aliquoting is unnecessary for -20°C storage

For technical support and original validation data for this product please contact:

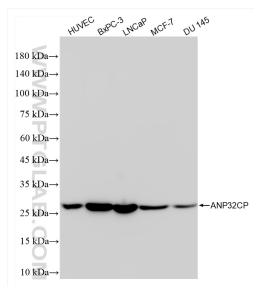
T: 4006900926

E: Proteintech-CN@ptglab.com

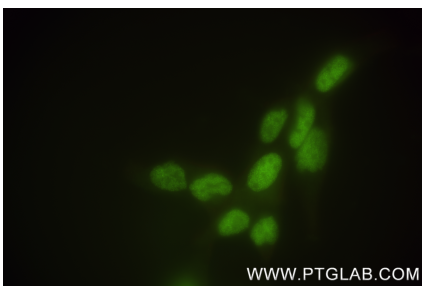
W: ptgcn.com

This product is exclusively available under Proteintech Group brand and is not available to purchase from any other manufacturer.

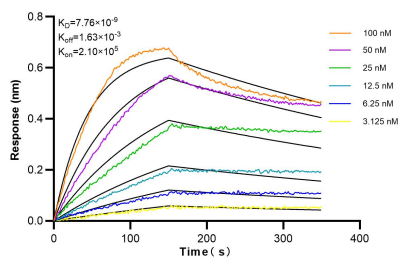
Selected Validation Data



Various lysates were subjected to SDS PAGE followed by western blot with 84553-1-RR (ANP32CP antibody) at dilution of 1:10000 incubated at room temperature for 1.5 hours.



Immunofluorescent analysis of (4% PFA) fixed LNCaP cells using ANP32CP antibody (84553-1-RR, Clone: 241562D12) at dilution of 1:250 and CoraLite® 488-Conjugated Goat Anti-Rabbit IgG(H+L) (SA00013-2).



Biolayer interferometry (BLI) kinetic assays of 84553-1-RR against Human ANP32CP were performed. The affinity constant is 7.76 nM.