

For Research Use Only

# HSL Recombinant antibody, PBS Only (Detector)

Catalog Number: 84540-1-PBS



## Basic Information

Catalog Number:

84540-1-PBS

Size:

1 mg/ml

Source:

Rabbit

Isotype:

IgG

Immunogen Catalog Number:

AG11360

GenBank Accession Number:

BC070041

GeneID (NCBI):

3991

UNIPROT ID:

Q05469

Full Name:

lipase, hormone-sensitive

Calculated MW:

117 kDa

Observed MW:

84 kDa

Purification Method:

Protein A purification

CloneNo.:

241875B11

## Applications

Tested Applications:

WB, IHC, Cytometric bead array, Sandwich ELISA, Indirect ELISA, Sample test

Species Specificity:

human, mouse, rat

## Background Information

Hormone sensitive lipase (HSL) belongs to the 'GDXG' lipolytic enzyme family. In adipose tissue and heart, it primarily hydrolyzes stored triglycerides to free fatty acids, while in steroidogenic tissues, it principally converts cholesteryl esters to free cholesterol for steroid hormone production. HSL has two isoforms with the molecular mass of 117 kDa and 84 kDa.

## Storage

Storage:

Store at -80°C.

The product is shipped with ice packs. Upon receipt, store it immediately at -80°C

Storage Buffer:

PBS Only

For technical support and original validation data for this product please contact:

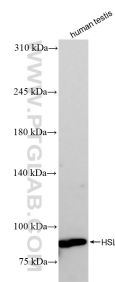
T: 4006900926

E: [Proteintech-CN@ptglab.com](mailto:Proteintech-CN@ptglab.com)

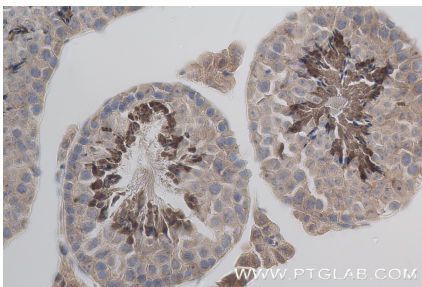
W: [ptgcn.com](http://ptgcn.com)

This product is exclusively available under Proteintech Group brand and is not available to purchase from any other manufacturer.

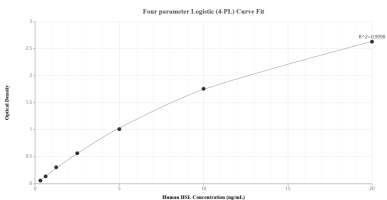
Selected Validation Data



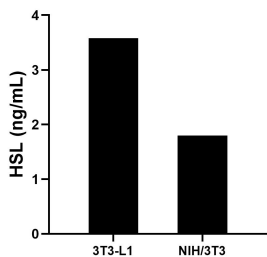
Human testis tissue were subjected to SDS PAGE followed by western blot with 84540-1-RR (HSL antibody) at dilution of 1:10000 incubated at room temperature for 1.5 hours. This data was developed using the same antibody clone with 84540-1-PBS in a different storage buffer formulation.



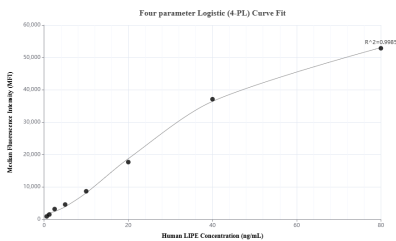
Immunohistochemical analysis of paraffin-embedded mouse testis tissue slide using 84540-1-RR (LIPE antibody) at dilution of 1:400 (under 40x lens). Heat mediated antigen retrieval with Tris-EDTA buffer (pH 9.0). This data was developed using the same antibody clone with 84540-1-PBS in a different storage buffer formulation.



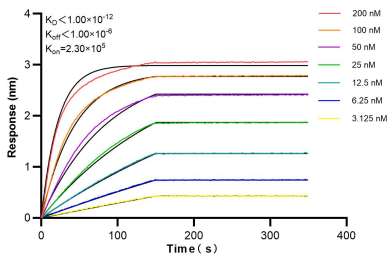
Sandwich ELISA standard curve of MP01374-1, Human HSL Recombinant Matched Antibody Pair - PBS only. 84540-3-PBS was coated to a plate as the capture antibody and incubated with serial dilutions of standard Ag11360. 84540-1-PBS was HRP conjugated as the detection antibody. Range: 0.313-20 ng/mL



The mean HSL concentration was determined to be 3.58 ng/mL in 3T3-L1 cell extract based on a 1.30 mg/mL extract load and 1.80 ng/mL in NIH/3T3 cell extract based on a 5.90 mg/mL extract load.



Cytometric bead array standard curve of MP01374-1, HSL Recombinant Matched Antibody Pair, PBS Only. Capture antibody: 84540-3-PBS. Detection antibody: 84540-1-PBS. Standard: Ag11360. Range: 0.625-80 ng/mL



Biolayer interferometry (BLI) kinetic assays of 84540-1-RR against Human HSL were performed. The affinity constant is below 1 pM.