

For Research Use Only

# CD43 Recombinant monoclonal antibody, PBS Only (Capture)

Catalog Number: 84539-8-PBS



## Basic Information

<b>Catalog Number:</b> 84539-8-PBS	<b>GenBank Accession Number:</b> NM_003123.6	<b>Purification Method:</b> Protein A purification
<b>Source:</b> Rabbit	<b>GeneID (NCBI):</b> 6693	<b>CloneNo.:</b> 260458E6
<b>Isotype:</b> IgG	<b>ENSEMBL Gene ID:</b> ENSG00000197471	
<b>Immunogen Catalog Number:</b> EG1761	<b>UNIPROT ID:</b> P16150	
	<b>Full Name:</b> sialophorin	
	<b>Calculated MW:</b> 40kDa	

## Applications

**Tested Applications:**  
Cytometric bead array, Indirect ELISA

**Species Specificity:**  
human

## Background Information

### Storage

**Storage:**  
Store at -80°C.  
**The product is shipped with ice packs. Upon receipt, store it immediately at -80°C**

**Storage Buffer:**  
PBS only, pH7.3

For technical support and original validation data for this product please contact:

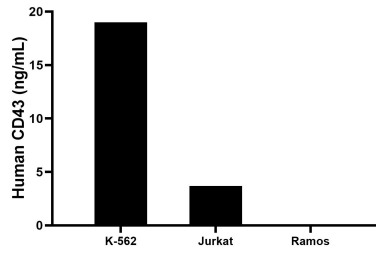
T: 4006900926

E: [Proteintech-CN@ptglab.com](mailto:Proteintech-CN@ptglab.com)

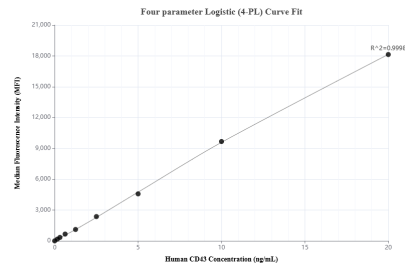
W: [ptgcn.com](http://ptgcn.com)

**This product is exclusively available under Proteintech Group brand and is not available to purchase from any other manufacturer.**

## Selected Validation Data



The mean CD43 concentration was determined to be 19.0 ng/mL in K-562 cell extract based on a 1.0 mg/mL extract load, 3.7 ng/mL in Jurkat cell extract based on a 1.0 mg/mL extract load, Ramos cell extract were served as a negative control.



Cytometric bead array standard curve of MP01360-3, CD43 Recombinant Matched Antibody Pair, PBS Only. Capture antibody: 84539-8-PBS. Detection antibody: 84539-7-PBS. Standard: Eg1761. Range: 0.156-20 ng/mL.