

For Research Use Only

# IL-1RA Recombinant antibody, PBS Only (Capture/Detector)

Catalog Number: 84532-3-PBS



## Basic Information

<b>Catalog Number:</b> 84532-3-PBS	<b>GenBank Accession Number:</b> BC009745	<b>Purification Method:</b> Protein A purification
<b>Size:</b> 1 mg/ml	<b>GeneID (NCBI):</b> 3557	<b>CloneNo.:</b> 241879G8
<b>Source:</b> Rabbit	<b>UNIPROT ID:</b> P18510	
<b>Isotype:</b> IgG	<b>Full Name:</b> interleukin 1 receptor antagonist	
<b>Immunogen Catalog Number:</b> AG1277	<b>Calculated MW:</b> 20 kDa	

## Applications

**Tested Applications:**  
Cytometric bead array, Sandwich ELISA, Indirect ELISA,  
Sample test

**Species Specificity:**  
human

## Background Information

### Storage

**Storage:**  
Store at -80°C.  
**The product is shipped with ice packs. Upon receipt, store it immediately at -80°C**

**Storage Buffer:**  
PBS Only

For technical support and original validation data for this product please contact:

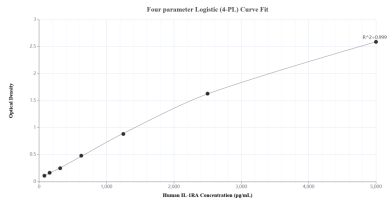
T: 4006900926

E: [Proteintech-CN@ptglab.com](mailto:Proteintech-CN@ptglab.com)

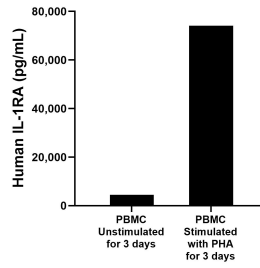
W: [ptgcn.com](http://ptgcn.com)

**This product is exclusively available under Proteintech Group brand and is not available to purchase from any other manufacturer.**

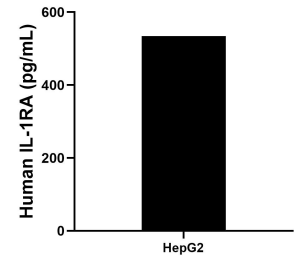
## Selected Validation Data



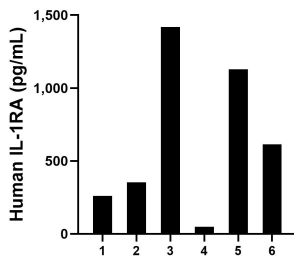
Sandwich ELISA standard curve of MP01389-3, Human IL-1RA Recombinant Matched Antibody Pair - PBS only. 84532-5-PBS was coated to a plate as the capture antibody and incubated with serial dilutions of standard Ag1277. 84532-3-PBS was HRP conjugated as the detection antibody. Range: 78.1-5000 pg/mL



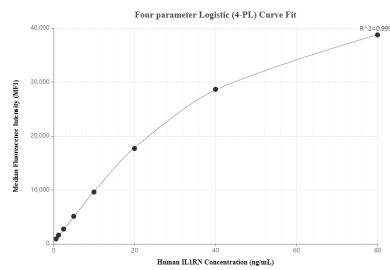
Human peripheral blood mononuclear cells (PBMC) were cultured unstimulated or stimulated with 10  $\mu$ g/mL PHA for 3 days. The mean IL-1RA concentration was determined to be 4,505.9 pg/mL in unstimulated PBMC supernatant, 74,132.2 pg/mL in PHA stimulated PBMC supernatant.



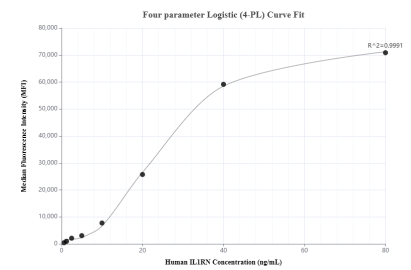
HepG2 cells were cultured in DMEM supplemented with 10% fetal bovine serum, 2.5 mM L-glutamine, 100 U/mL penicillin, and 100  $\mu$ g/mL streptomycin sulfate. An aliquot of the cell culture supernate was removed, assayed for human IL-1RA, and measured 534.4 pg/mL.



Serum of six individual healthy human donors was measured. The IL-1RA concentration of detected samples was determined to be 637.3 pg/mL with a range of 49.7-1,417.8 pg/mL



Cytometric bead array standard curve of MP01389-1, IL-1RA Recombinant Matched Antibody Pair, PBS Only. Capture antibody: 84532-3-PBS. Detection antibody: 84532-2-PBS. Standard: Ag1277. Range: 0.625-80 ng/mL



Cytometric bead array standard curve of MP01389-2, IL-1RA Recombinant Matched Antibody Pair, PBS Only. Capture antibody: 84532-1-PBS. Detection antibody: 84532-3-PBS. Standard: Ag1277. Range: 0.625-80 ng/mL