

For Research Use Only

Mouse ALCAM Recombinant antibody, PBS Only (Detector)

Catalog Number: 84528-3-PBS



Basic Information

Catalog Number:

84528-3-PBS

Concentration:

1 mg/ml

Source:

Rabbit

Isotype:

IgG

Immunogen Catalog Number:

EG1524

GenBank Accession Number:

NM_009655.3

GeneID (NCBI):

11658

UNIPROT ID:

Q61490

Full Name:

activated leukocyte cell adhesion
molecule

Calculated MW:

65 kDa

Purification Method:

Protein A purification

CloneNo.:

241945C11

Applications

Tested Applications:

Cytometric bead array, Sandwich ELISA, Indirect ELISA,
Sample test

Species Specificity:

mouse

Background Information

Storage

Storage:

Store at -80°C.

The product is shipped with ice packs. Upon receipt, store it immediately at -80°C

Storage Buffer:

PBS only, pH7.3

For technical support and original validation data for this product please contact:

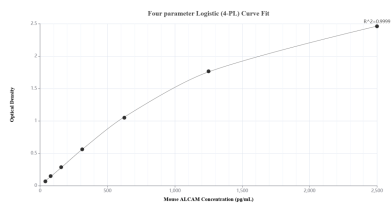
T: 4006900926

E: Proteintech-CN@ptglab.com

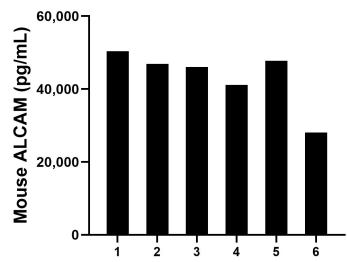
W: ptgcn.com

This product is exclusively available under Proteintech Group brand and is not available to purchase from any other manufacturer.

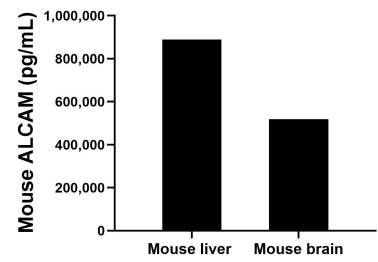
Selected Validation Data



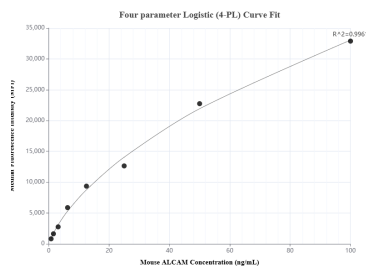
Sandwich ELISA standard curve of MP01379-1, Mouse ALCAM Recombinant Matched Antibody Pair - PBS only. 84528-1-PBS was coated to a plate as the capture antibody and incubated with serial dilutions of standard Eg1524. 84528-3-PBS was HRP conjugated as the detection antibody. Range: 39.1-2500 pg/mL.



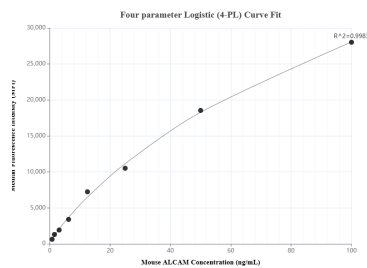
Serum of six mice was measured. The ALCAM concentration of detected samples was determined to be 43,380.5 pg/mL with a range of 28,091.3-50,380.4 pg/mL.



The mean ALCAM concentration was determined to be 888,916.9 pg/mL in mouse liver tissue extract based on a 3.7 mg/mL extract load and 518,424.5 pg/mL in mouse brain tissue extract based on a 2.0 mg/mL extract load.



Cytometric bead array standard curve of MP01379-1, MOUSE ALCAM Recombinant Matched Antibody Pair, PBS Only. Capture antibody: 84528-1-PBS. Detection antibody: 84528-3-PBS. Standard: Eg1524. Range: 0.781-100 ng/mL.



Cytometric bead array standard curve of MP01379-2, MOUSE ALCAM Recombinant Matched Antibody Pair, PBS Only. Capture antibody: 84528-2-PBS. Detection antibody: 84528-3-PBS. Standard: Eg1524. Range: 0.781-100 ng/mL.