

For Research Use Only

LYVE-1 Recombinant antibody, PBS Only (Capture)

Catalog Number: 84526-3-PBS



Basic Information

Catalog Number:

84526-3-PBS

Size:

1 mg/ml

Source:

Rabbit

Isotype:

IgG

GenBank Accession Number:

NM_006691.4

GeneID (NCBI):

10894

UNIPROT ID:

Q9Y5Y7

Full Name:

lymphatic vessel endothelial
hyaluronan receptor 1

Calculated MW:

35kDa

Purification Method:

Protein A purification

CloneNo.:

241795F7

Applications

Tested Applications:

Cytometric bead array, Sandwich ELISA, Indirect ELISA,
Sample test

Species Specificity:

human

Background Information

Storage

Storage:

Store at -80°C.

The product is shipped with ice packs. Upon receipt, store it immediately at -80°C

Storage Buffer:

PBS Only

For technical support and original validation data for this product please contact:

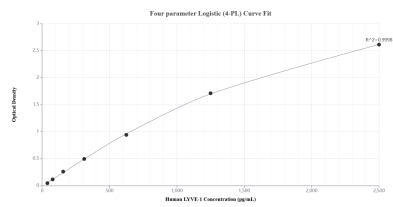
T: 4006900926

E: Proteintech-CN@ptglab.com

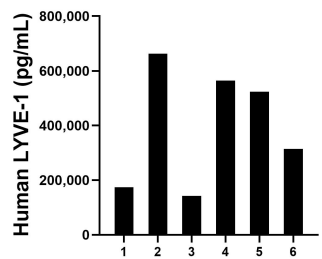
W: ptgcn.com

This product is exclusively available under Proteintech Group brand and is not available to purchase from any other manufacturer.

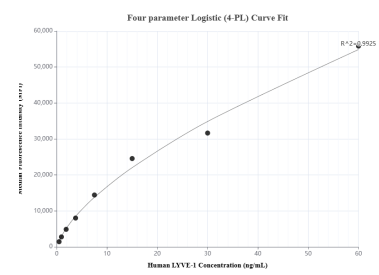
Selected Validation Data



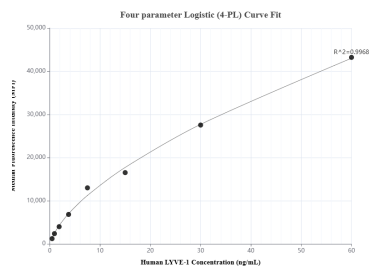
Sandwich ELISA standard curve of MP01383-1, Human LYVE-1 Recombinant Matched Antibody Pair - PBS only. 84526-3-PBS was coated to a plate as the capture antibody and incubated with serial dilutions of standard Eg1615. 84526-2-PBS was HRP conjugated as the detection antibody. Range: 39.1-2500 pg/mL



Serum of six individual healthy human donors was measured. The LYVE-1 concentration of detected samples was determined to be 396,843.6 pg/mL with a range of 142,673.4-662,904.1 pg/mL



Cytometric bead array standard curve of MP01383-1, LYVE-1 Recombinant Matched Antibody Pair, PBS Only. Capture antibody: 84526-3-PBS. Detection antibody: 84526-2-PBS. Standard: Eg1615. Range: 0.469-60 ng/mL



Cytometric bead array standard curve of MP01383-2, LYVE-1 Recombinant Matched Antibody Pair, PBS Only. Capture antibody: 84526-3-PBS. Detection antibody: 84526-1-PBS. Standard: Eg1615. Range: 0.469-60 ng/mL