

For Research Use Only

LBR Recombinant antibody

Catalog Number: 84522-6-RR



Basic Information

Catalog Number:

84522-6-RR

Size:

1000 ug/ml

Source:

Rabbit

Isotype:

IgG

Immunogen Catalog Number:

AG3088

GenBank Accession Number:

BC020079

GeneID (NCBI):

3930

UNIPROT ID:

Q14739

Full Name:

lamin B receptor

Calculated MW:

615 aa, 71 kDa

Observed MW:

58 kDa

Purification Method:

Protein A purification

CloneNo.:

241864H1

Recommended Dilutions:

WB 1:5000-1:50000

Applications

Tested Applications:

WB, FC (Intra), ELISA

Species Specificity:

human, mouse, rat

Positive Controls:

WB : HeLa cells, HepG2 cells, HEK-293 cells, Jurkat cells, K-562 cells, C2C12 cells, HSC-T6 cells

Background Information

Lamin-B receptor (LBR) is an integral membrane protein of the inner nuclear membrane that contains a hydrophilic N-terminal end protruding into the nucleoplasm, eight hydrophobic segments that span the membrane and a short, nucleoplasmic C-terminal tail (PMID: 28858257). LBR anchors the lamina and the heterochromatin to the inner nuclear membrane (PMID: 10828963; 28858257). It is also essential for cholesterol synthesis (PMID: 27336722). Mutations of the LBR gene have been associated with autosomal recessive HEM/Greenberg skeletal dysplasia and Pelger-Huët anomaly and Greenberg skeletal dysplasia (PMID: 12618959; 12490533). The calculated molecular mass of LBR is 71 kDa, which is larger than the apparent molecular mass of 58 kDa, probably due to the aberrant migration of membrane proteins subjected to SDS-PAGE (PMID: 2847165; 2170422).

Storage

Storage:

Store at -20°C. Stable for one year after shipment.

Storage Buffer:

PBS with 0.02% sodium azide and 50% glycerol pH 7.3.

Aliquoting is unnecessary for -20°C storage

For technical support and original validation data for this product please contact:

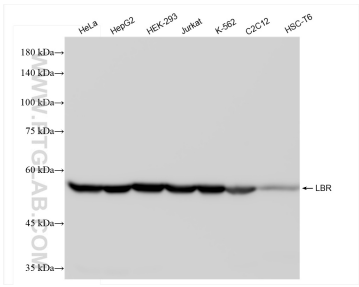
T: 4006900926

E: Proteintech-CN@ptglab.com

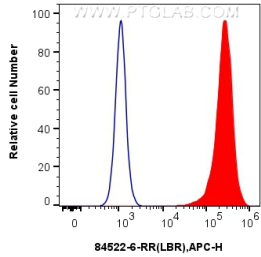
W: ptgcn.com

This product is exclusively available under Proteintech Group brand and is not available to purchase from any other manufacturer.

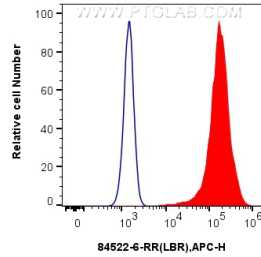
Selected Validation Data



Various lysates were subjected to SDS PAGE followed by western blot with 84522-6-RR (LBR antibody) at dilution of 1:10000 incubated at room temperature for 1.5 hours.



1×10^6 HepG2 cells were intracellularly stained with 0.25 μ g LBR Recombinant antibody (84522-6-RR, Clone:241864H1) and APC-Conjugated Goat Anti-Rabbit IgG(H+L)(red), or 0.25 μ g Rabbit IgG Isotype Control Recombinant Antibody (98136-1-RR, Clone: 240953C9) (blue). Cells were fixed with 4% PFA and permeabilized with Flow Cytometry Perm Buffer (PF00011-C).



1×10^6 HeLa cells were intracellularly stained with 0.25 μ g LBR Recombinant antibody (84522-6-RR, Clone:241864H1) and APC-Conjugated Goat Anti-Rabbit IgG(H+L)(red), or 0.25 μ g Rabbit IgG Isotype Control Recombinant Antibody (98136-1-RR, Clone: 240953C9) (blue). Cells were fixed with 4% PFA and permeabilized with Flow Cytometry Perm Buffer (PF00011-C).