

For Research Use Only

LBR Recombinant antibody, PBS Only (Capture)

Catalog Number: 84522-1-PBS



Basic Information

Catalog Number:	84522-1-PBS	GenBank Accession Number:	BC020079	Purification Method:	Protein A purification
Size:	1 mg/ml	GeneID (NCBI):	3930	CloneNo.:	241864B4
Source:	Rabbit	UNIPROT ID:	Q14739		
Isotype:	IgG	Full Name:	lamin B receptor		
Immunogen Catalog Number:	AG3088	Calculated MW:	615 aa, 71 kDa		

Applications

Tested Applications:
Cytometric bead array, Sandwich ELISA, Indirect ELISA, Sample test

Species Specificity:
human

Background Information

Storage

Storage:
Store at -80°C.
The product is shipped with ice packs. Upon receipt, store it immediately at -80°C

Storage Buffer:
PBS Only

For technical support and original validation data for this product please contact:

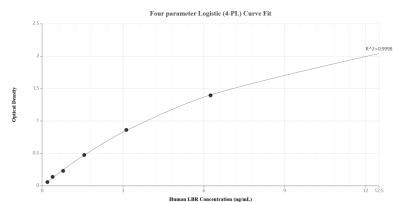
T: 4006900926

E: Proteintech-CN@ptglab.com

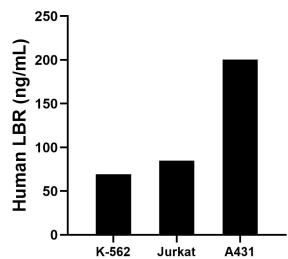
W: ptgcn.com

This product is exclusively available under Proteintech Group brand and is not available to purchase from any other manufacturer.

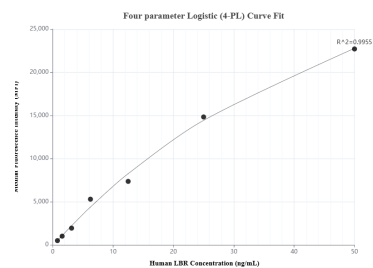
Selected Validation Data



Sandwich ELISA standard curve of MP01373-3, Human LBR Recombinant Matched Antibody Pair - PBS only. 84522-1-PBS was coated to a plate as the capture antibody and incubated with serial dilutions of standard Ag3088. 84522-5-PBS was HRP conjugated as the detection antibody. Range: 0.195-12.5 ng/mL.



The mean LBR concentration was determined to be 69.49 ng/mL in K-562 cell extract based on a 2.40 mg/mL extract load, 84.74 ng/mL in Jurkat cell extract based on a 1.50 mg/mL extract load and 200.46 ng/mL in A431 cell extract based on a 1.50 mg/mL extract load.



Cytometric bead array standard curve of MP01373-1, LBR Recombinant Matched Antibody Pair, PBS Only. Capture antibody: 84522-1-PBS. Detection antibody: 84522-3-PBS. Standard: Ag3088. Range: 0.781-50 ng/mL.