

For Research Use Only

# SAE1 Recombinant antibody, PBS Only

Catalog Number: 84516-6-PBS



## Basic Information

Catalog Number:	84516-6-PBS	GenBank Accession Number:	BC000344	Purification Method:	Protein A purification
Concentration:	1 mg/ml	GeneID (NCBI):	10055	CloneNo.:	241923F12
Source:	Rabbit	UNIPROT ID:	Q9UBE0		
Isotype:	IgG	Full Name:	SUMO1 activating enzyme subunit 1		
Immunogen Catalog Number:	AG0275	Calculated MW:	38 kDa		

## Applications

**Tested Applications:**  
IHC, IF/ICC, FC (Intra), Indirect ELISA

**Species Specificity:**  
human

## Background Information

SAE1(SUMO-activating enzyme subunit 1) is also named as AOS1, SUA1, UBLE1A and belongs to the ubiquitin-activating E1 family. SAE1 has a calculated molecular mass of 38 kD. SAE1 and UBA2 form a heterodimer that functions as a SUMO-activating enzyme for the sumoylation of proteins(PMID:9920803). Western blot analysis of synchronized HeLa cells detects increased AOS1 expression as cells progressed through S phase, followed by a substantial decrease in G2 phase. Immunofluorescence analysis shows AOS1 and UBA2 distributed throughout nuclei, but they are excluded from nucleoli.(PMID:11481243).

## Storage

**Storage:**  
Store at -80°C.  
**The product is shipped with ice packs. Upon receipt, store it immediately at -80°C**

**Storage Buffer:**  
PBS only

For technical support and original validation data for this product please contact:

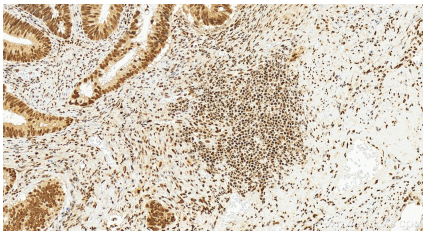
T: 4006900926

E: Proteintech-CN@ptglab.com

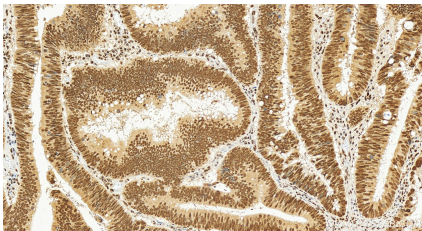
W: ptgcn.com

**This product is exclusively available under Proteintech Group brand and is not available to purchase from any other manufacturer.**

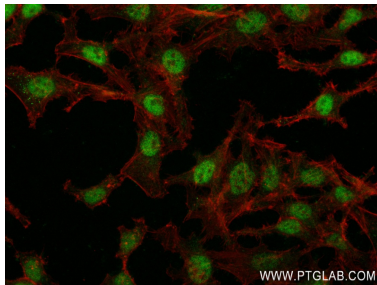
Selected Validation Data



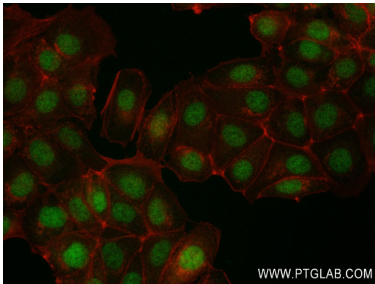
Immunohistochemical analysis of paraffin-embedded human colon cancer tissue slide using 84516-6-RR (SAE1 antibody) at dilution of 1:600 (under 20x lens). Heat mediated antigen retrieval with Tris-EDTA buffer (pH 9.0). This data was developed using the same antibody clone with 84516-6-PBS in a different storage buffer formulation.



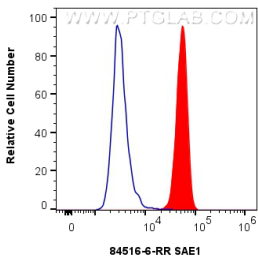
Immunohistochemical analysis of paraffin-embedded human colon cancer tissue slide using 84516-6-RR (SAE1 antibody) at dilution of 1:600 (under 20x lens). Heat mediated antigen retrieval with Tris-EDTA buffer (pH 9.0). This data was developed using the same antibody clone with 84516-6-PBS in a different storage buffer formulation.



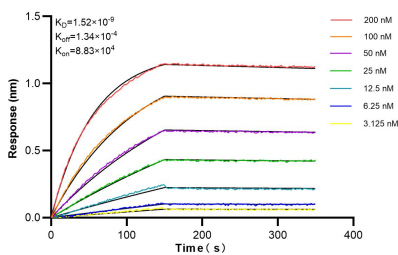
Immunofluorescent analysis of (4% PFA) fixed HeLa cells using SAE1 antibody (84516-6-RR, Clone: 241923F12) at dilution of 1:500 and CoraLite®488-Conjugated Goat Anti-Rabbit IgG(H+L) (SA00013-2), CL594-Phalloidin (red). This data was developed using the same antibody clone with 84516-6-PBS in a different storage buffer formulation.



Immunofluorescent analysis of (4% PFA) fixed MCF-7 cells using SAE1 antibody (84516-6-RR, Clone: 241923F12) at dilution of 1:500 and CoraLite®488-Conjugated Goat Anti-Rabbit IgG(H+L) (SA00013-2), CL594-Phalloidin (red). This data was developed using the same antibody clone with 84516-6-PBS in a different storage buffer formulation.



1x10<sup>6</sup> A549 cells were intracellularly stained with 0.25 ug SAE1 Recombinant antibody (84516-6-RR, Clone:241923F12) and CoraLite®488-Conjugated Goat Anti-Rabbit IgG(H+L) (SA00013-2)(red), or 0.25 ug Rabbit IgG Isotype Control RecAb (98136-1-RR, Clone: 240953C9) (blue). Cells were fixed and permeabilized with Transcription Factor Staining Buffer Kit (PF00011). This data was developed using the same antibody clone with 84516-6-PBS in a different storage buffer



Bi-layer interferometry (BLI) kinetic assays of 84516-6-RR against Human SAE1 were performed. The affinity constant is 1.52 nM.