

For Research Use Only

MCM2 Recombinant antibody, PBS Only (Capture)

Catalog Number: 84511-2-PBS



Basic Information

Catalog Number:	84511-2-PBS	GenBank Accession Number:	BC007670	Purification Method:	Protein A purification
Concentration:	1 mg/ml	GeneID (NCBI):	4171	CloneNo.:	241968D3
Source:	Rabbit	UNIPROT ID:	P49736		
Isotype:	IgG	Full Name:	minichromosome maintenance complex component 2		
Immunogen Catalog Number:	AG0798	Calculated MW:	102 kDa		
		Observed MW:	116-125 kDa		

Applications

Tested Applications:
WB, IHC, IF/ICC, FC (Intra), Cytometric bead array, Sandwich ELISA, Indirect ELISA, Sample test

Species Specificity:
human

Background Information

The MCM2-7 complex forms the core of the replicative helicase which acts as the molecular motor that uses ATP binding and hydrolysis to fuel the unwinding of double-stranded DNA at the replication fork in eukaryotes. This complex is the putative replicative helicase essential for 'once per cell cycle' DNA replication initiation and elongation in eukaryotic cells. MCM2, also named CDCL1 and BM28, is a human nuclear protein that plays an important role in 2 crucial steps of the cell cycle, namely, onset of DNA replication and cell division.

Storage

Storage:
Store at -80°C.
The product is shipped with ice packs. Upon receipt, store it immediately at -80°C

Storage Buffer:
PBS Only

For technical support and original validation data for this product please contact:

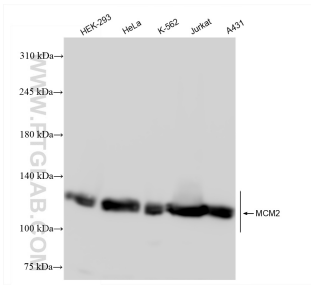
T: 4006900926

E: Proteintech-CN@ptglab.com

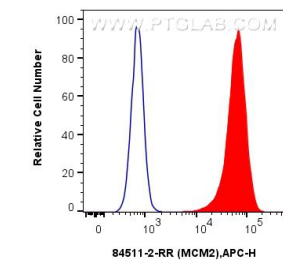
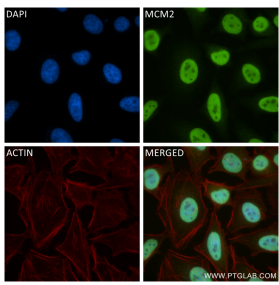
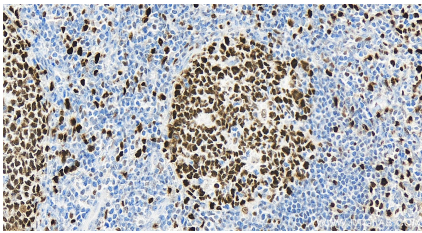
W: ptgcn.com

This product is exclusively available under Proteintech Group brand and is not available to purchase from any other manufacturer.

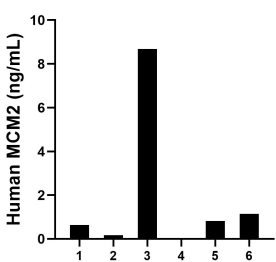
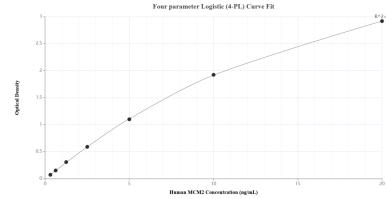
Selected Validation Data



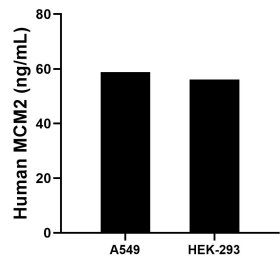
Various lysates were subjected to SDS PAGE followed by western blot with 84511-2-RR (MCM2 antibody) at dilution of 1:10000 incubated at room temperature for 1.5 hours. This data was developed using the same antibody clone with 84511-2-PBS in a different storage buffer formulation.



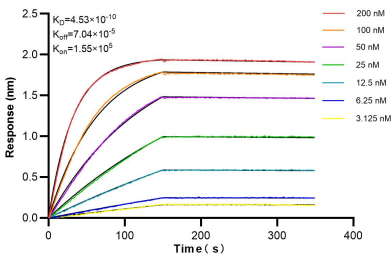
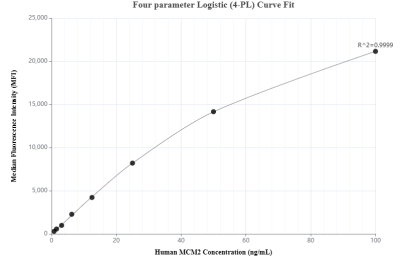
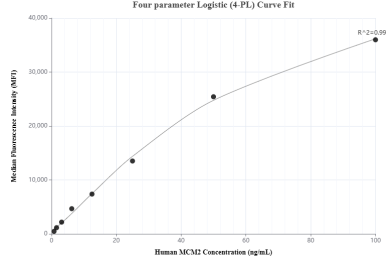
1x10⁶ HeLa cells were intracellularly stained with 0.25 ug MCM2 Recombinant antibody (84511-2-RR, Clone:241968D3) and APC-Conjugated Goat Anti-Rabbit IgG(H+L)(red), or 0.25 ug Rabbit IgG Isotype Control Recombinant Antibody (98136-1-RR, Clone: 240953C9) (blue). Cells were fixed and permeabilized with True-Nuclear Transcription Factor Buffer Set. This data was developed using the same antibody clone with 84511-2-PBS in a different storage buffer formulation.



Serum of six individual healthy human donors was measured. The MCM2 concentration of detected samples was determined to be 2.29 ng/mL with a range of ND-8.68 ng/mL.



The mean MCM2 concentration was determined to be 58.85 ng/mL in A549 cell extract based on a 2.70 mg/mL extract load and 56.17 ng/mL in HEK-293 cell extract based on a 3.30 mg/mL extract load.



Biolayer interferometry (BLI) kinetic assays of 84511-2-RR against Human MCM2 were performed. The affinity constant is 0.453 nM.