

For Research Use Only

CD6 Recombinant antibody, PBS Only (Capture)

Catalog Number: 84508-1-PBS



Basic Information

Catalog Number:

84508-1-PBS

Size:

1 mg/ml

Source:

Rabbit

Isotype:

IgG

GenBank Accession Number:

BC033755

GeneID (NCBI):

923

UNIPROT ID:

P30203

Full Name:

CD6 molecule

Purification Method:

Protein A purification

CloneNo.:

241965G6

Applications

Tested Applications:

Cytometric bead array, Sandwich ELISA, Indirect ELISA,
Sample test

Species Specificity:

human

Background Information

CD6 is a type I transmembrane glycoprotein of 105-130 kDa that belongs to the scavenger receptor cysteine-rich superfamily (PMID: 21880988). It is composed of an extracellular region, which consists of three tandem SRCR domains, a transmembrane region, and a cytoplasmic tail devoid of intrinsic catalytic activity but harbouring several phosphorylatable residues suitable for intracellular signal transduction (PMID: 38139340; 23711376). CD6 is expressed by T cells, medullary thymocytes, a subset of B cells and NK cells, and in some cells of the brain (PMID: 1919444; 21178331). CD6 plays a role in lymphocyte activation, proliferation, and survival processes via interaction with its endogenous ligands.

Storage

Storage:

Store at -80°C.

The product is shipped with ice packs. Upon receipt, store it immediately at -80°C

Storage Buffer:

PBS Only

For technical support and original validation data for this product please contact:

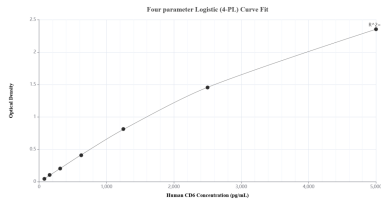
T: 4006900926

E: Proteintech-CN@ptglab.com

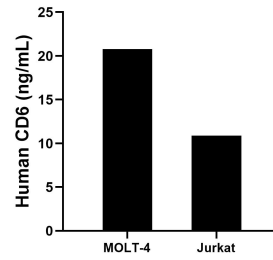
W: ptgcn.com

This product is exclusively available under Proteintech Group brand and is not available to purchase from any other manufacturer.

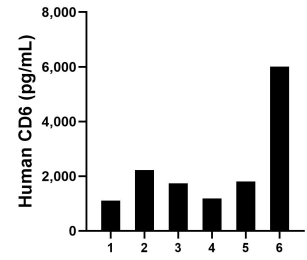
Selected Validation Data



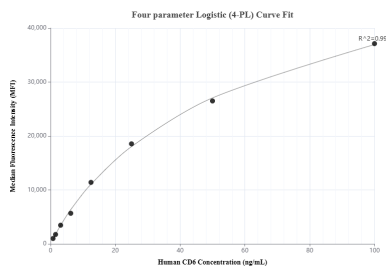
Sandwich ELISA standard curve of MP01358-2, Human CD6 Recombinant Matched Antibody Pair - PBS only. 84508-1-PBS was coated to a plate as the capture antibody and incubated with serial dilutions of standard Eg2079. 84508-2-PBS was HRP conjugated as the detection antibody. Range: 78.1-5000 pg/mL



The mean CD6 concentration was determined to be 20.8 ng/mL in MOLT-4 cell extract based on a 1.2 mg/mL extract load and 10.9 ng/mL in Jurkat cell extract based on a 4.2 mg/mL extract load.



Serum of six individual healthy human donors was measured. The CD6 concentration of detected samples was determined to be 2,345.6 pg/mL with a range of 1,106.3-6,008.2 pg/mL



Cytometric bead array standard curve of MP01358-2, CD6 Recombinant Matched Antibody Pair, PBS Only. Capture antibody: 84508-1-PBS. Detection antibody: 84508-2-PBS. Standard: Eg2079. Range: 0.781-100 ng/mL