

For Research Use Only

CD63 Recombinant antibody, PBS Only (Detector)

Catalog Number: 84507-1-PBS



Basic Information

Catalog Number:

84507-1-PBS

Size:

1 mg/ml

Source:

Rabbit

Isotype:

IgG

GenBank Accession Number:

BC002349

GeneID (NCBI):

967

UNIPROT ID:

P08962

Full Name:

CD63 molecule

Calculated MW:

26 kDa

Purification Method:

Protein A purification

CloneNo.:

241964A2

Applications

Tested Applications:

Cytometric bead array, Sandwich ELISA, Indirect ELISA, Sample test

Species Specificity:

human

Background Information

Storage

Storage:

Store at -80°C.

The product is shipped with ice packs. Upon receipt, store it immediately at -80°C

Storage Buffer:

PBS Only

For technical support and original validation data for this product please contact:

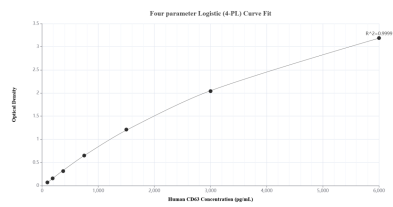
T: 4006900926

E: Proteintech-CN@ptglab.com

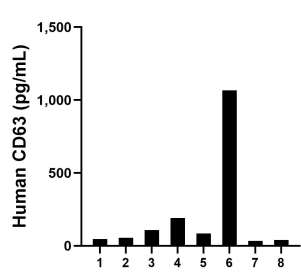
W: ptgcn.com

This product is exclusively available under Proteintech Group brand and is not available to purchase from any other manufacturer.

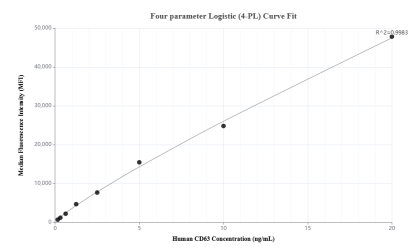
Selected Validation Data



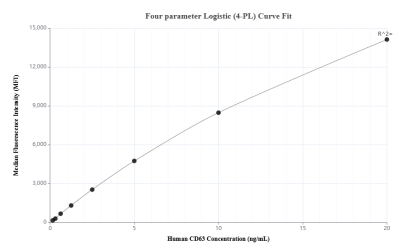
Sandwich ELISA standard curve of MP01370-1, Human CD63 Recombinant Matched Antibody Pair - PBS only. 84507-3-PBS was coated to a plate as the capture antibody and incubated with serial dilutions of standard Eg2064. 84507-1-PBS was HRP conjugated as the detection antibody. Range: 93.8-6000 pg/mL



Serum of eight individual healthy human donors was measured. The CD63 concentration of detected samples was determined to be 259.0 pg/mL with a range of 46.2-1,067.1 pg/mL



Cytometric bead array standard curve of MP01370-1, CD63 Recombinant Matched Antibody Pair, PBS Only. Capture antibody: 84507-3-PBS. Detection antibody: 84507-1-PBS. Standard: Eg2064. Range: 0.156-20 ng/mL



Cytometric bead array standard curve of MP01370-2, CD63 Recombinant Matched Antibody Pair, PBS Only. Capture antibody: 84507-2-PBS. Detection antibody: 84507-1-PBS. Standard: Eg2064. Range: 0.156-20 ng/mL