

For Research Use Only

Mouse RBP4 Recombinant antibody, PBS Only (Detector)

Catalog Number: 84503-3-PBS



Basic Information

Catalog Number:	84503-3-PBS	GenBank Accession Number:	NM_011255.3	Purification Method:	Protein A purification
Concentration:	1 mg/ml	GeneID (NCBI):	19662	CloneNo.:	242040G5
Source:	Rabbit	UNIPROT ID:	Q00724		
Isotype:	IgG	Full Name:	retinol binding protein 4, plasma		
Immunogen Catalog Number:	EG1140	Calculated MW:	23kDa		

Applications

Tested Applications:
Cytometric bead array, Sandwich ELISA, Indirect ELISA,
Sample test

Species Specificity:
mouse

Background Information

Storage

Storage:
Store at -80°C.
The product is shipped with ice packs. Upon receipt, store it immediately at -80°C

Storage Buffer:
PBS only, pH7.3

For technical support and original validation data for this product please contact:

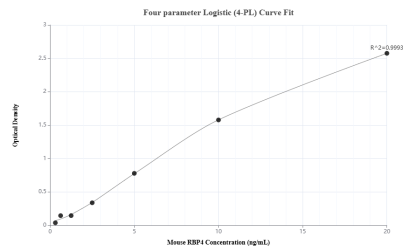
T: 4006900926

E: Proteintech-CN@ptglab.com

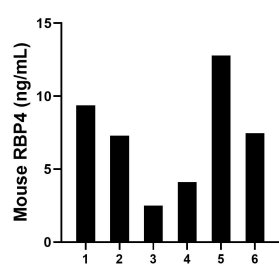
W: ptgcn.com

This product is exclusively available under Proteintech Group brand and is not available to purchase from any other manufacturer.

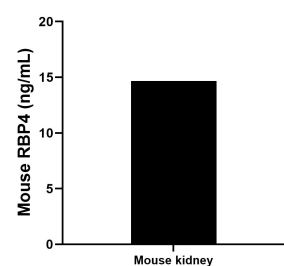
Selected Validation Data



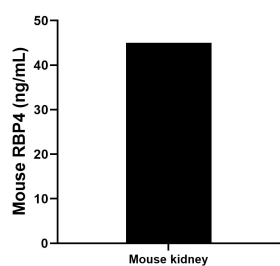
Sandwich ELISA standard curve of MP01365-1, Mouse RBP4 Recombinant Matched Antibody Pair - PBS only. 84503-1-PBS was coated to a plate as the capture antibody and incubated with serial dilutions of standard Eg1140. 84503-3-PBS was HRP conjugated as the detection antibody. Range: 0.313-20 ng/mL



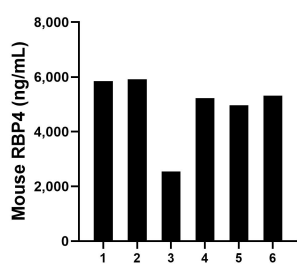
Urine of six mice was measured. The mouse RBP4 concentration of detected samples was determined to be 7.25 ng/mL with a range of 2.50 - 12.78 ng/mL



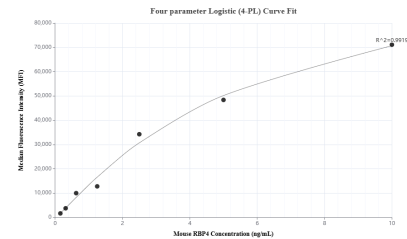
Mouse kidney tissue from one adult mouse (chopped in 1-2 mm pieces in 30 mL of medium) was cultured in RPMI supplemented with 10% fetal calfserum and 50 μM β-mercaptoethanol. Aliquots of the cell culture supernates were removed, assayed for levels of mouse RBP4, and measured 14.68 ng/mL



The mean RBP4 concentration was determined to be 45.00 ng/mL in mouse kidney tissue extract based on a 1.9 mg/mL extract load.



Serum of six mice was measured. The mouse RBP4 concentration of detected samples was determined to be 4,970.53 ng/mL with a range of 2,551.06 - 5,913.45 ng/mL



Cytometric bead array standard curve of MP01365-1, MOUSE RBP4 Recombinant Matched Antibody Pair, PBS Only. Capture antibody: 84503-1-PBS. Detection antibody: 84503-3-PBS. Standard: Eg1140. Range: 0.156-10 ng/mL