

For Research Use Only

# Mouse RBP4 Recombinant antibody, PBS Only (Capture)

Catalog Number: 84503-1-PBS



## Basic Information

Catalog Number:

84503-1-PBS

Concentration:

1 mg/ml

Source:

Rabbit

Isotype:

IgG

Immunogen Catalog Number:

EG1140

GenBank Accession Number:

NM\_011255.3

GeneID (NCBI):

19662

UNIPROT ID:

Q00724

Full Name:

retinol binding protein 4, plasma

Calculated MW:

23kDa

Purification Method:

Protein A purification

CloneNo.:

242040A5

## Applications

Tested Applications:

Cytometric bead array, Sandwich ELISA, Indirect ELISA,  
Sample test

Species Specificity:

mouse

## Background Information

### Storage

Storage:

Store at -80°C.

**The product is shipped with ice packs. Upon receipt, store it immediately at -80°C**

Storage Buffer:

PBS only, pH7.3

For technical support and original validation data for this product please contact:

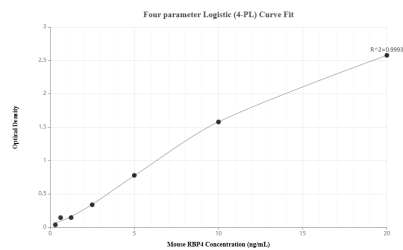
T: 4006900926

E: [Proteintech-CN@ptglab.com](mailto:Proteintech-CN@ptglab.com)

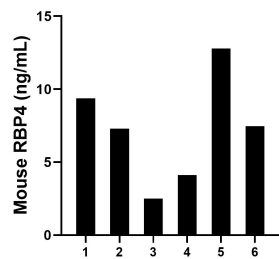
W: [ptgcn.com](http://ptgcn.com)

**This product is exclusively available under Proteintech Group brand and is not available to purchase from any other manufacturer.**

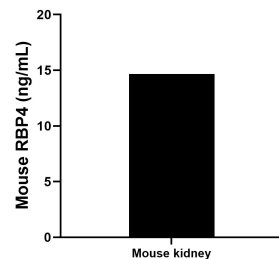
# Selected Validation Data



Sandwich ELISA standard curve of MP01365-1, Mouse RBP4 Recombinant Matched Antibody Pair - PBS only. 84503-1-PBS was coated to a plate as the capture antibody and incubated with serial dilutions of standard Eg1140. 84503-3-PBS was HRP conjugated as the detection antibody. Range: 0.313-20 ng/mL



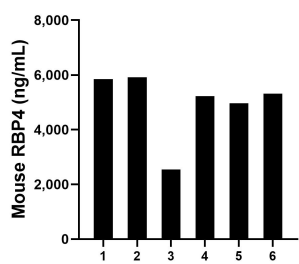
Urine of six mice was measured. The mouse RBP4 concentration of detected samples was determined to be 7.25 ng/mL with a range of 2.50 - 12.78 ng/mL.



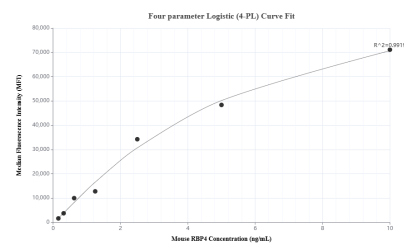
Mouse kidney tissue from one adult mouse (chopped in 1-2 mm pieces in 30 mL of medium) was cultured in RPMI supplemented with 10% fetal calfserum and 50  $\mu$  M  $\beta$ -mercaptoethanol. Aliquots of the cell culture supernates were removed, assayed for levels of mouse RBP4, and measured 14.68 ng/mL



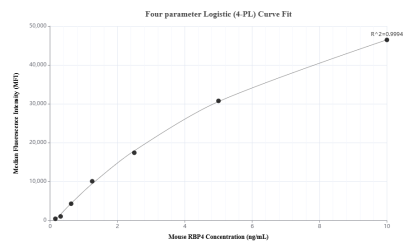
The mean RBP4 concentration was determined to be 45.00 ng/mL in mouse kidney tissue extract based on a 1.9 mg/mL extract load.



Serum of six mice was measured. The mouse RBP4 concentration of detected samples was determined to be 4,970.53 ng/mL with a range of 2,551.06 - 5,913.45 ng/mL.



Cytometric bead array standard curve of MP01365-1, MOUSE RBP4 Recombinant Matched Antibody Pair, PBS Only. Capture antibody: 84503-1-PBS. Detection antibody: 84503-3-PBS. Standard: Eg1140. Range: 0.156-10 ng/mL



Cytometric bead array standard curve of MP01365-2, MOUSE RBP4 Recombinant Matched Antibody Pair, PBS Only. Capture antibody: 84503-1-PBS. Detection antibody: 84503-2-PBS. Standard: Eg1140. Range: 0.156-10 ng/mL