

For Research Use Only

GLAST/EAAT1 Recombinant antibody, PBS Only (Capture/Detector)

Catalog Number: 84497-1-PBS



Basic Information

Catalog Number:

84497-1-PBS

Size:

1 mg/ml

Source:

Rabbit

Isotype:

IgG

Immunogen Catalog Number:

AG16962

GenBank Accession Number:

BC037310

GeneID (NCBI):

6507

UNIPROT ID:

P43003

Full Name:

solute carrier family 1 (glial high
affinity glutamate transporter),
member 3

Calculated MW:

542 aa, 60 kDa

Purification Method:

Protein A purification

CloneNo.:

241907A9

Applications

Tested Applications:

Cytometric bead array, Indirect ELISA

Species Specificity:

human

Background Information

Storage

Storage:

Store at -80°C.

The product is shipped with ice packs. Upon receipt, store it immediately at -80°C

Storage Buffer:

PBS Only

For technical support and original validation data for this product please contact:

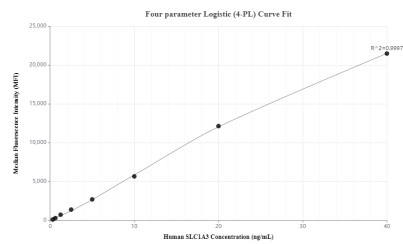
T: 4006900926

E: Proteintech-CN@ptglab.com

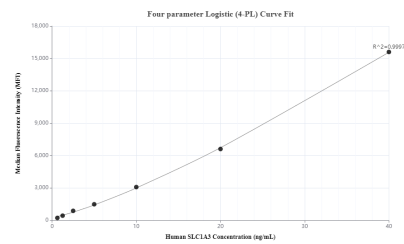
W: ptgcn.com

This product is exclusively available under Proteintech Group brand and is not available to purchase from any other manufacturer.

Selected Validation Data



Cytometric bead array standard curve of MP01339-1, GLAST/EAAT1 Recombinant Matched Antibody Pair, PBS Only. Capture antibody: 84497-2-PBS. Detection antibody: 84497-1-PBS. Standard: Ag16962. Range: 0.313-40 ng/mL.



Cytometric bead array standard curve of MP01339-2, GLAST/EAAT1 Recombinant Matched Antibody Pair, PBS Only. Capture antibody: 84497-1-PBS. Detection antibody: 84497-3-PBS. Standard: Ag16962. Range: 0.625-40 ng/mL.