

For Research Use Only

RBP4 Recombinant antibody, PBS Only (Detector)

Catalog Number: 84496-2-PBS



Basic Information

Catalog Number:

84496-2-PBS

Size:

1 mg/ml

Source:

Rabbit

Isotype:

IgG

GenBank Accession Number:

BC020633

GeneID (NCBI):

5950

UNIPROT ID:

P02753

Full Name:

retinol binding protein 4, plasma

Calculated MW:

201 aa, 23 kDa

Purification Method:

Protein A purification

CloneNo.:

241944F6

Applications

Tested Applications:

Cytometric bead array, Sandwich ELISA, Indirect ELISA, Sample test

Species Specificity:

human

Background Information

Storage

Storage:

Store at -80°C.

The product is shipped with ice packs. Upon receipt, store it immediately at -80°C

Storage Buffer:

PBS Only

For technical support and original validation data for this product please contact:

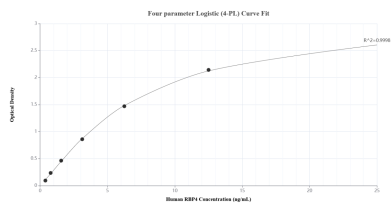
T: 4006900926

E: Proteintech-CN@ptglab.com

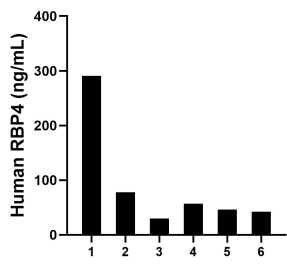
W: ptgcn.com

This product is exclusively available under Proteintech Group brand and is not available to purchase from any other manufacturer.

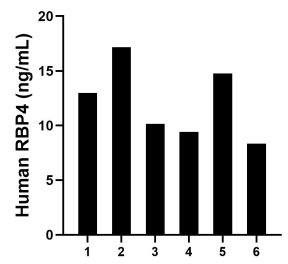
Selected Validation Data



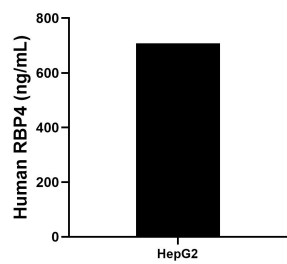
Sandwich ELISA standard curve of MP01338-1, Human RBP4 Recombinant Matched Antibody Pair - PBS only. 84496-1-PBS was coated to a plate as the capture antibody and incubated with serial dilutions of standard Eg31642. 84496-2-PBS was HRP conjugated as the detection antibody. Range: 0.391-25 ng/mL.



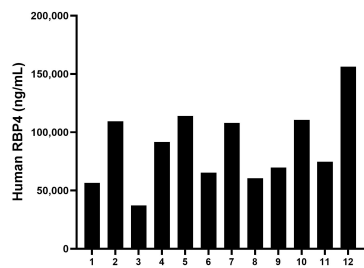
Urine of six individual healthy human donors was measured. The RBP4 concentration of detected samples was determined to be 90.68 ng/mL with a range of 29.96 - 290.83 ng/mL.



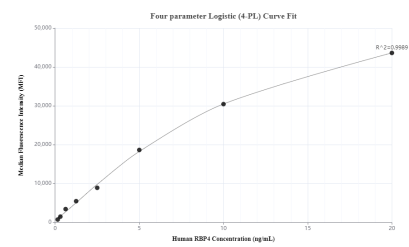
Saliva of six individual healthy human donors was measured. The RBP4 concentration of detected samples was determined to be 12.14 ng/mL with a range of 8.34-17.17 ng/mL.



HepG2 cells were cultured in DMEM supplemented with 10% fetal bovine serum, 2.5 mM L-glutamine, 100 U/mL penicillin, and 100 µg/mL streptomycin sulfate. An aliquot of the cell culture supernate was removed, assayed for human RBP4, and measured 707.54 ng/mL.



Serum of twelve individual healthy human donors was measured. The RBP4 concentration of detected samples was determined to be 87,804.85 ng/mL with a range of 37,160.99 - 156,178.64 ng/mL.



Cytometric bead array standard curve of MP01338-1, RBP4 Recombinant Matched Antibody Pair, PBS Only. Capture antibody: 84496-1-PBS. Detection antibody: 84496-2-PBS. Standard: Eg31642. Range: 0.156-20 ng/mL.