

For Research Use Only

# Mouse EPCR/CD201 Recombinant antibody, PBS Only (Detector)

Catalog Number: 84494-3-PBS



## Basic Information

Catalog Number:

84494-3-PBS

Concentration:

1 mg/ml

Source:

Rabbit

Isotype:

IgG

Immunogen Catalog Number:

EG1517

GenBank Accession Number:

NM\_011171.2

GeneID (NCBI):

19124

UNIPROT ID:

Q64695

Full Name:

protein C receptor, endothelial

Calculated MW:

27kDa

Purification Method:

Protein A purification

CloneNo.:

241853C5

## Applications

Tested Applications:

Cytometric bead array, Sandwich ELISA, Indirect ELISA, Sample test

Species Specificity:

mouse

## Background Information

### Storage

Storage:

Store at -80°C.

The product is shipped with ice packs. Upon receipt, store it immediately at -80°C

Storage Buffer:

PBS only, pH7.3

For technical support and original validation data for this product please contact:

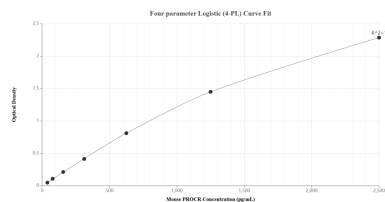
T: 4006900926

E: [Proteintech-CN@ptglab.com](mailto:Proteintech-CN@ptglab.com)

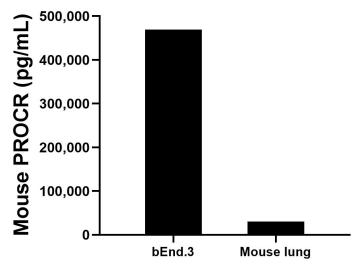
W: [ptgcn.com](http://ptgcn.com)

This product is exclusively available under Proteintech Group brand and is not available to purchase from any other manufacturer.

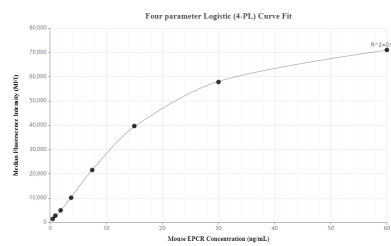
## Selected Validation Data



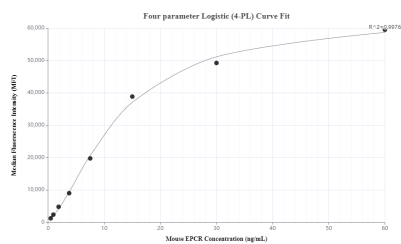
Sandwich ELISA standard curve of MP01323-3, Mouse PROCR Recombinant Matched Antibody Pair - PBS only. 84494-2-PBS was coated to a plate as the capture antibody and incubated with serial dilutions of standard Eg1517. 84494-3-PBS was HRP conjugated as the detection antibody. Range: 39.1-2500 pg/mL.



The mean PROCR concentration was determined to be 469,591.3 pg/mL in bEnd.3 cell extract based on a 1.8 mg/mL extract load and 30,645.7 pg/mL in mouse lung tissue extract based on a 1.6 mg/mL extract load.



Cytometric bead array standard curve of MP01323-1, MOUSE EPCR Recombinant Matched Antibody Pair, PBS Only. Capture antibody: 84494-1-PBS. Detection antibody: 84494-3-PBS. Standard: Eg1517. Range: 0.469-60 ng/mL.



Cytometric bead array standard curve of MP01323-3, MOUSE EPCR Recombinant Matched Antibody Pair, PBS Only. Capture antibody: 84494-2-PBS. Detection antibody: 84494-3-PBS. Standard: Eg1517. Range: 0.469-60 ng/mL.