

For Research Use Only

Mouse EPCR/CD201 Recombinant antibody, PBS Only (Capture)

Catalog Number: 84494-2-PBS



Basic Information

Catalog Number: 84494-2-PBS	GenBank Accession Number: NM_011171.2	Purification Method: Protein A purification
Concentration: 1 mg/ml	GeneID (NCBI): 19124	CloneNo.: 241853A9
Source: Rabbit	UNIPROT ID: Q64695	
Isotype: IgG	Full Name: protein C receptor, endothelial	
Immunogen Catalog Number: EG1517	Calculated MW: 27kDa	
	Observed MW: 40-50 kDa	

Applications

Tested Applications:
WB, IF-P, Cytometric bead array, Sandwich ELISA, Indirect ELISA, Sample test

Species Specificity:
mouse

Background Information

Protein C receptor (PROCRCR), also known as activated protein C receptor (APC receptor), EPCR, or CD201, is a transmembrane glycoprotein. EPCR promotes the activation of protein C, which has anticoagulant and cytoprotective effects. EPCR facilitates the activation of protein C by the thrombin-thrombomodulin complex but also facilitates APC-mediated cytoprotective impact on cells that involve the activation of protease-activated receptors (PAR) 1 and 3(PMID: 27207424).

Storage

Storage:
Store at -80°C.
The product is shipped with ice packs. Upon receipt, store it immediately at -80°C

Storage Buffer:
PBS only, pH7.3

For technical support and original validation data for this product please contact:

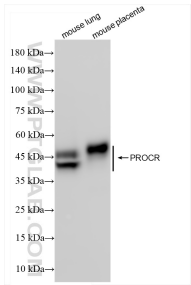
T: 4006900926

E: Proteintech-CN@ptglab.com

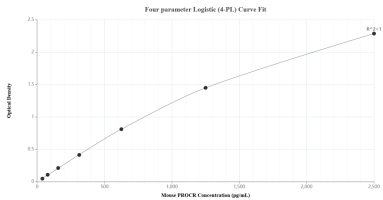
W: ptgcn.com

This product is exclusively available under Proteintech Group brand and is not available to purchase from any other manufacturer.

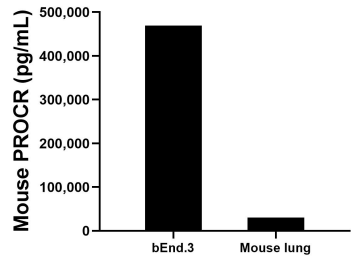
Selected Validation Data



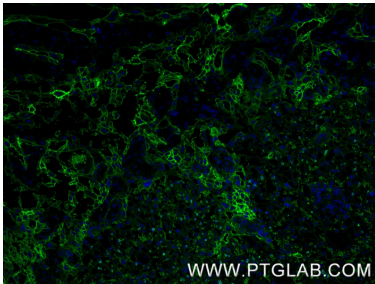
Various lysates were subjected to SDS PAGE followed by western blot with 84494-2-RR (EPCR/CD201 antibody) at dilution of 1:10000 incubated at room temperature for 1.5 hours. This data was developed using the same antibody clone with 84494-2-PBS in a different storage buffer formulation.



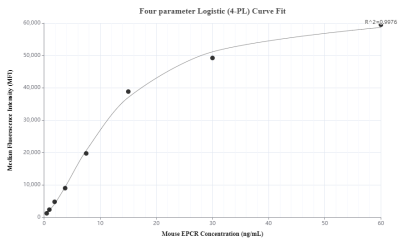
Sandwich ELISA standard curve of MP01323-3, Mouse PROCR Recombinant Matched Antibody Pair - PBS only. 84494-2-PBS was coated to a plate as the capture antibody and incubated with serial dilutions of standard Eg1517. 84494-3-PBS was HRP conjugated as the detection antibody. Range: 39.1-2500 pg/mL.



The mean PROCR concentration was determined to be 469,591.3 pg/mL in bEnd.3 cell extract based on a 1.8 mg/mL extract load and 30,645.7 pg/mL in mouse lung tissue extract based on a 1.6 mg/mL extract load.



Immunofluorescent analysis of (4% PFA) fixed paraffin-embedded mouse placenta tissue using EPCR/CD201 antibody (84494-2-RR, Clone: 241853A9) at dilution of 1:400 and CoraLite®488-Conjugated Goat Anti-Rabbit IgG(H+L) (SA00013-2). Heat mediated antigen retrieval with Tris-EDTA buffer (pH 9.0). This data was developed using the same antibody clone with 84494-2-PBS in a different storage buffer formulation.



Cytometric bead array standard curve of MP01323-3, MOUSE EPCR Recombinant Matched Antibody Pair, PBS Only. Capture antibody: 84494-2-PBS. Detection antibody: 84494-3-PBS. Standard: Eg1517. Range: 0.469-60 ng/mL.