

For Research Use Only

Mouse EMMPRIN/CD147 Recombinant antibody, PBS Only (Detector)

Catalog Number: 84488-4-PBS



Basic Information

Catalog Number:

84488-4-PBS

Size:

1 mg/ml

Source:

Rabbit

Isotype:

IgG

GenBank Accession Number:

NM_009768.2

GeneID (NCBI):

12215

UNIPROT ID:

P18572-1

Full Name:

basigin

Calculated MW:

42kDa

Purification Method:

Protein A purification

CloneNo.:

241852H7

Applications

Tested Applications:

Cytometric bead array, Sandwich ELISA, Indirect ELISA, Sample test

Species Specificity:

mouse

Background Information

Storage

Storage:

Store at -80°C.

The product is shipped with ice packs. Upon receipt, store it immediately at -80°C

Storage Buffer:

PBS Only

For technical support and original validation data for this product please contact:

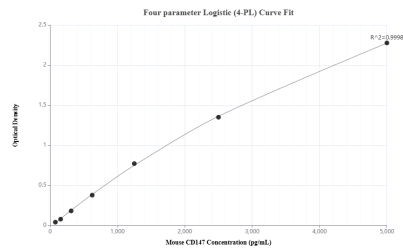
T: 4006900926

E: Proteintech-CN@ptglab.com

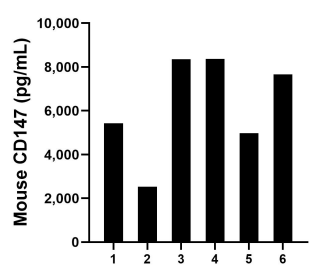
W: ptgcn.com

This product is exclusively available under Proteintech Group brand and is not available to purchase from any other manufacturer.

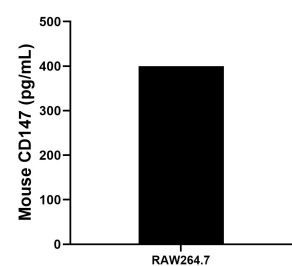
Selected Validation Data



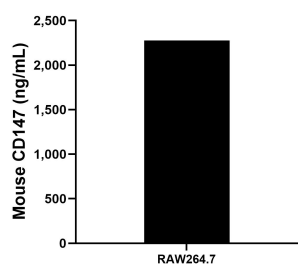
Sandwich ELISA standard curve of MP01320-4, Mouse CD147 Recombinant Matched Antibody Pair - PBS only. 84488-5-PBS was coated to a plate as the capture antibody and incubated with serial dilutions of standard Eg1530. 84488-4-PBS was HRP conjugated as the detection antibody. Range: 78.1-5000 pg/mL



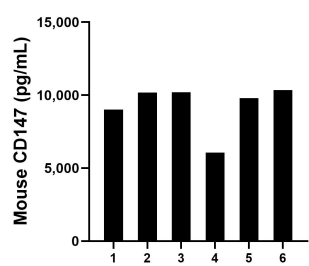
Urine of six mice was measured. The mouse CD147 concentration of detected samples was determined to be 6,220.5 pg/mL with a range of 2,528.0 - 8372.5 pg/mL



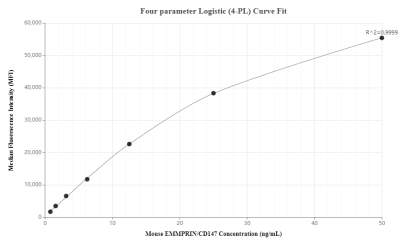
RAW264.7 cells were cultured in DMEM supplemented with 10% fetal bovine serum. An aliquot of the cell culture supernate was removed, assayed for mouse CD147, and measured 400.0 pg/mL



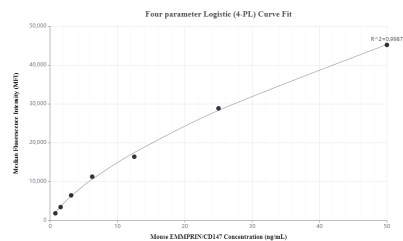
The mean CD147 concentration was determined to be 2,277.8 ng/mL in RAW264.7 cell extract based on a 4.8 mg/mL extract load.



Serum of six mice was measured. The mouse CD147 concentration of detected samples was determined to be 9,267.4 pg/mL with a range of 6,072.1 - 10,344.1 pg/mL



Cytometric bead array standard curve of MP01320-1, MOUSE CD147 Recombinant Matched Antibody Pair, PBS Only. Capture antibody: 84488-2-PBS. Detection antibody: 84488-4-PBS. Standard: Eg1530. Range: 0.781-50 ng/mL



Cytometric bead array standard curve of MP01320-3, MOUSE CD147 Recombinant Matched Antibody Pair, PBS Only. Capture antibody: 84488-3-PBS. Detection antibody: 84488-4-PBS. Standard: Eg1530. Range: 0.781-50 ng/mL