

For Research Use Only

BAFF/TNFSF13B Recombinant antibody, PBS Only (Detector)

Catalog Number: 84487-2-PBS



Basic Information

Catalog Number:

84487-2-PBS

Size:

1 mg/ml

Source:

Rabbit

Isotype:

IgG

GenBank Accession Number:

BC020674

GeneID (NCBI):

10673

UNIPROT ID:

Q9Y275-1

Full Name:

tumor necrosis factor (ligand)
superfamily, member 13b

Calculated MW:

32 kDa

Purification Method:

Protein A purification

CloneNo.:

241846D12

Applications

Tested Applications:

Cytometric bead array, Sandwich ELISA, Indirect ELISA,
Sample test

Species Specificity:

human

Background Information

Storage

Storage:

Store at -80°C.

The product is shipped with ice packs. Upon receipt, store it immediately at -80°C

Storage Buffer:

PBS Only

For technical support and original validation data for this product please contact:

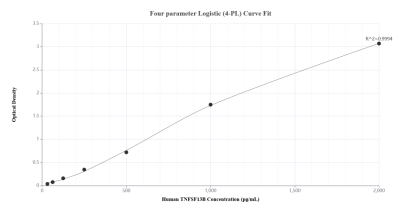
T: 4006900926

E: Proteintech-CN@ptglab.com

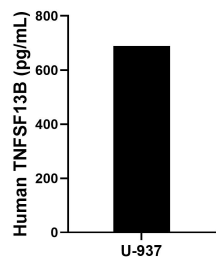
W: ptgcn.com

This product is exclusively available under Proteintech Group brand and is not available to purchase from any other manufacturer.

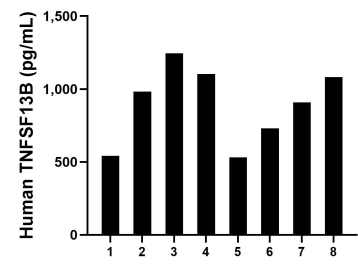
Selected Validation Data



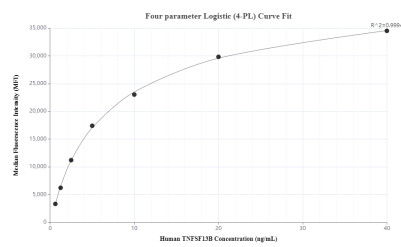
Sandwich ELISA standard curve of MP01318-3, Human BAFF/TNFSF13B Recombinant Matched Antibody Pair - PBS only. 84487-4-PBS was coated to a plate as the capture antibody and incubated with serial dilutions of standard Eg1970. 84487-2-PBS was HRP conjugated as the detection antibody. Range: 31.25-2000 pg/mL



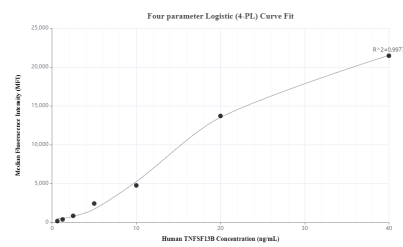
U-937 were cultured in DMEM supplemented with 10% fetal bovine serum, 2.5 mM L-glutamine, 100 U/mL penicillin, and 100 µg/mL streptomycin sulfate. An aliquot of the cell culture supernate was removed, assayed for human BAFF/TNFSF13B, and measured 689.3 pg/mL



Serum of eight individual healthy human donors was measured. The BAFF/TNFSF13B concentration of detected samples was determined to be 890.6 pg/mL with a range of 531.1-1,244.5 pg/mL



Cytometric bead array standard curve of MP01318-1, BAFF/TNFSF13B Recombinant Matched Antibody Pair, PBS Only. Capture antibody: 84487-1-PBS. Detection antibody: 84487-2-PBS. Standard: Eg1970. Range: 0.625-40 ng/mL



Cytometric bead array standard curve of MP01318-2, BAFF/TNFSF13B Recombinant Matched Antibody Pair, PBS Only. Capture antibody: 84487-3-PBS. Detection antibody: 84487-2-PBS. Standard: Eg1970. Range: 0.625-40 ng/mL