

For Research Use Only

# GINS2 Recombinant antibody, PBS Only (Capture)

Catalog Number: 84486-2-PBS



## Basic Information

Catalog Number:

84486-2-PBS

Size:

1 mg/ml

Source:

Rabbit

Isotype:

IgG

Immunogen Catalog Number:

AG9180

GenBank Accession Number:

BC010164

GeneID (NCBI):

51659

UNIPROT ID:

Q9Y248

Full Name:

GINS complex subunit 2 (Psf2 homolog)

Calculated MW:

185 aa, 21 kDa

Observed MW:

20-25 kDa

Purification Method:

Protein A purification

CloneNo.:

241870E9

## Applications

Tested Applications:

WB, IF/ICC, FC (Intra), Cytometric bead array, Indirect ELISA

Species Specificity:

human

## Background Information

GINS2, also named as DNA replication complex GINS protein PSF2, CGI-122, DC5, or HSPC037, is a 185 amino acid protein, which belongs to the GINS2/PSF2 family. The GINS complex plays an essential role in the initiation of DNA replication, and progression of DNA replication forks. GINS complex seems to bind preferentially to single-stranded DNA. GINS2 is a part of the the GINS complex, an integral component of the replicative helicase machinery that facilitates progression of the replisome complex.

## Storage

Storage:

Store at -80°C.

**The product is shipped with ice packs. Upon receipt, store it immediately at -80°C**

Storage Buffer:

PBS Only

For technical support and original validation data for this product please contact:

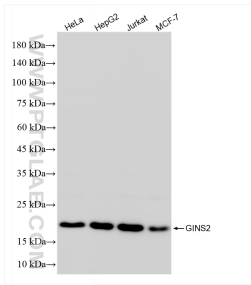
T: 4006900926

E: [Proteintech-CN@ptglab.com](mailto:Proteintech-CN@ptglab.com)

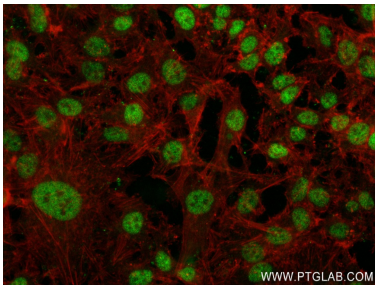
W: [ptgcn.com](http://ptgcn.com)

**This product is exclusively available under Proteintech Group brand and is not available to purchase from any other manufacturer.**

Selected Validation Data

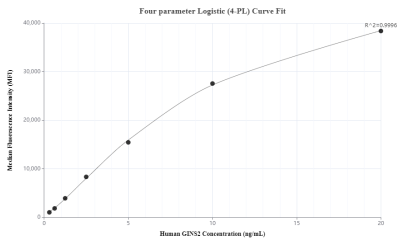


Various lysates were subjected to SDS PAGE followed by western blot with 84486-2-RR (GINS2 antibody) at dilution of 1:4000 incubated at room temperature for 1.5 hours. This data was developed using the same antibody clone with 84486-2-PBS in a different storage buffer formulation.

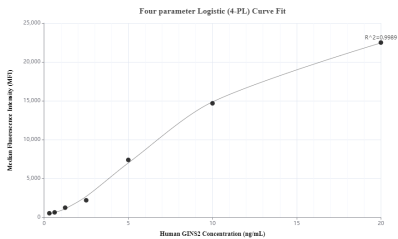


Immunofluorescent analysis of (4% PFA) fixed HeLa cells using GINS2 antibody (84486-2-RR, Clone: 241870E9 ) at dilution of 1:400 and CoraLite@488-Conjugated Goat Anti-Rabbit IgG(H+L) (SA00013-2), CL594-Phalloidin (red). This data was developed using the same antibody clone with 84486-2-PBS in a different storage buffer formulation.

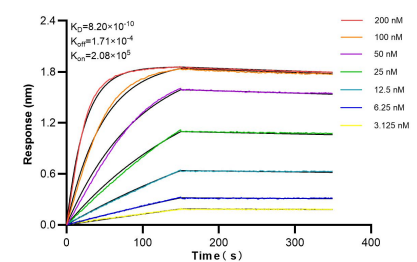
1x10<sup>6</sup> Jurkat cells were intracellularly stained with 0.25 ug GINS2 Recombinant antibody (84486-2-RR, Clone:241870E9) and CoraLite@488-Conjugated Goat Anti-Rabbit IgG(H+L) (SA00013-2)(red), or 0.25 ug Rabbit IgG Isotype Control RecAb (98136-1-RR, Clone: 240953C9) (blue). Cells were fixed and permeabilized with Transcription Factor Staining Buffer Kit (PF00011). This data was developed using the same antibody clone with 84486-2-PBS in a different storage buffer



Cytometric bead array standard curve of MP01325-1, GINS2 Recombinant Matched Antibody Pair, PBS Only. Capture antibody: 84486-2-PBS. Detection antibody: 84486-1-PBS. Standard: Ag9180. Range: 0.313-20 ng/mL



Cytometric bead array standard curve of MP01325-2, GINS2 Recombinant Matched Antibody Pair, PBS Only. Capture antibody: 84486-2-PBS. Detection antibody: 84486-3-PBS. Standard: Ag9180. Range: 0.313-20 ng/mL



Biolayer interferometry (BLI) kinetic assays of 84486-2-RR against Human GINS2 were performed. The affinity constant is 0.82 nM.