

For Research Use Only

# CKAP4 Recombinant antibody, PBS Only

Catalog Number: 84485-4-PBS



## Basic Information

<b>Catalog Number:</b> 84485-4-PBS	<b>GenBank Accession Number:</b> BC082972	<b>Purification Method:</b> Protein A purification
<b>Size:</b> 1 mg/ml	<b>GeneID (NCBI):</b> 10970	<b>CloneNo.:</b> 241871B6
<b>Source:</b> Rabbit	<b>UNIPROT ID:</b> Q07065	
<b>Isotype:</b> IgG	<b>Full Name:</b> cytoskeleton-associated protein 4	
<b>Immunogen Catalog Number:</b> AG10022	<b>Calculated MW:</b> 602 aa, 66 kDa	
	<b>Observed MW:</b> 63 kDa	

## Applications

**Tested Applications:**  
WB, IF/ICC, FC (Intra), Indirect ELISA

**Species Specificity:**  
human

## Background Information

CKAP4 (Cytoskeleton-associated protein 4), also known as CLIMP-63 (cytoskeleton-linking membrane protein 63), is a 63 kDa cytoskeleton-linking membrane protein. CKAP4 is a novel DKK1-binding protein on the cell surface membrane of Madin-Darby canine kidney (MDCK) epithelial cells, and evaluated CKAP4-mediated DKK1 signaling in cancer cell proliferation (PMID: 27322059). In addition, CKAP4 was modified with palmitate at Cys100 by palmitoyl acyltransferase DHHC2 (PMID: 18296695), and palmitoylation was required for CKAP4 localization to PM lipid rafts to promote cancer cell proliferation (PMID: 31744930).

## Storage

**Storage:**  
Store at -80°C.  
**The product is shipped with ice packs. Upon receipt, store it immediately at -80°C**

**Storage Buffer:**  
PBS Only

For technical support and original validation data for this product please contact:

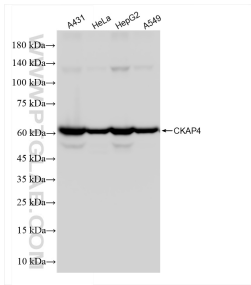
T: 4006900926

E: [Proteintech-CN@ptglab.com](mailto:Proteintech-CN@ptglab.com)

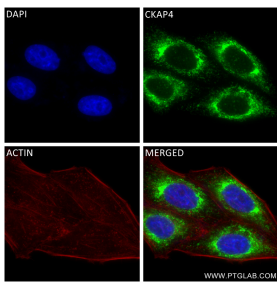
W: [ptgcn.com](http://ptgcn.com)

**This product is exclusively available under Proteintech Group brand and is not available to purchase from any other manufacturer.**

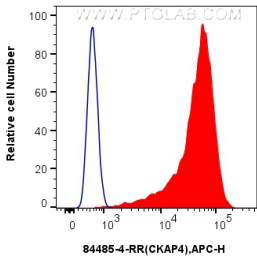
Selected Validation Data



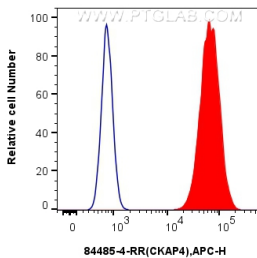
Various lysates were subjected to SDS PAGE followed by western blot with 84485-4-RR (CKAP4 antibody) at dilution of 1:10000 incubated at room temperature for 1.5 hours. This data was developed using the same antibody clone with 84485-4-PBS in a different storage buffer formulation.



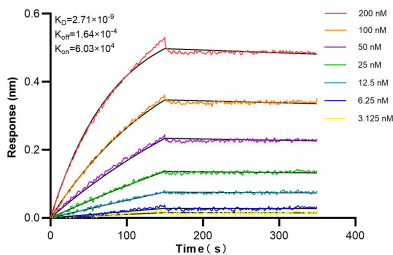
Immunofluorescent analysis of (4% PFA) fixed HepG2 cells using CKAP4 antibody (84485-4-RR, Clone: 241871B6 ) at dilution of 1:400 and CoraLite®488-Conjugated Goat Anti-Rabbit IgG(H+L) (SA00013-2), CL594-Phalloidin (red). This data was developed using the same antibody clone with 84485-4-PBS in a different storage buffer formulation.



1x10<sup>6</sup> HeLa cells were intracellularly stained with 0.25 ug CKAP4 Recombinant antibody (84485-4-RR, Clone:241871B6) and APC-Conjugated Goat Anti-Rabbit IgG(H+L) (red), or 0.25 ug Rabbit IgG Isotype Control Recombinant Antibody (98136-1-RR, Clone: 240953C9) (blue). Cells were fixed with 4% PFA and permeabilized with Flow Cytometry Perm Buffer (PF00011-C). This data was developed using the same antibody clone with 84485-4-PBS in a different storage buffer



1x10<sup>6</sup> U2OS cells were intracellularly stained with 0.25 ug CKAP4 Recombinant antibody (84485-4-RR, Clone:241871B6) and APC-Conjugated Goat Anti-Rabbit IgG(H+L) (red), or 0.25 ug Rabbit IgG Isotype Control Recombinant Antibody (98136-1-RR, Clone: 240953C9) (blue). Cells were fixed with 4% PFA and permeabilized with Flow Cytometry Perm Buffer (PF00011-C). This data was developed using the same antibody clone with 84485-4-PBS in a different storage buffer



Biolayer interferometry (BLI) kinetic assays of 84485-4-RR against Human CKAP4 were performed. The affinity constant is 2.71 nM.