

For Research Use Only

CKAP4 Recombinant antibody, PBS Only (Capture)

Catalog Number: 84485-1-PBS



Basic Information

Catalog Number: 84485-1-PBS	GenBank Accession Number: BC082972	Purification Method: Protein A purification
Concentration: 1000 µg/ml	GeneID (NCBI): 10970	CloneNo.: 241871A11
Source: Rabbit	UNIPROT ID: Q07065	
Isotype: IgG	Full Name: cytoskeleton-associated protein 4	
Immunogen Catalog Number: AG10022	Calculated MW: 602 aa, 66 kDa	

Applications

Tested Applications:
Cytometric bead array, Sandwich ELISA, Indirect ELISA,
Sample test

Species Specificity:
human

Background Information

Storage

Storage:
Store at -80°C.
The product is shipped with ice packs. Upon receipt, store it immediately at -80°C

Storage Buffer:
PBS only, pH7.3

For technical support and original validation data for this product please contact:

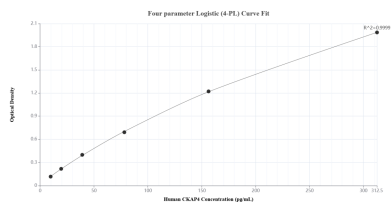
T: 4006900926

E: Proteintech-CN@ptglab.com

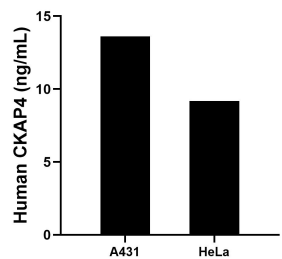
W: ptgcn.com

This product is exclusively available under Proteintech Group brand and is not available to purchase from any other manufacturer.

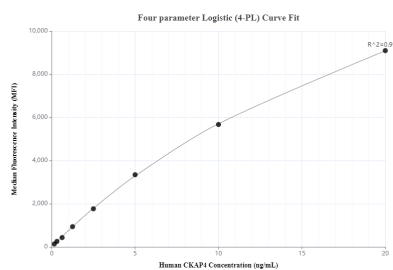
Selected Validation Data



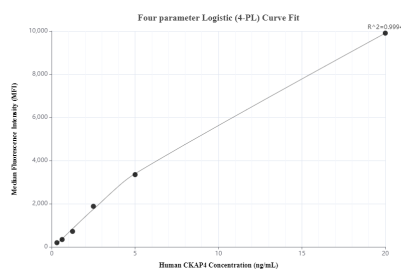
Sandwich ELISA standard curve of MP01324-1, Human CKAP4 Recombinant Matched Antibody Pair - PBS only. 84485-1-PBS was coated to a plate as the capture antibody and incubated with serial dilutions of standard Ag10022. 84485-2-PBS was HRP conjugated as the detection antibody. Range: 9.77-313 pg/mL.



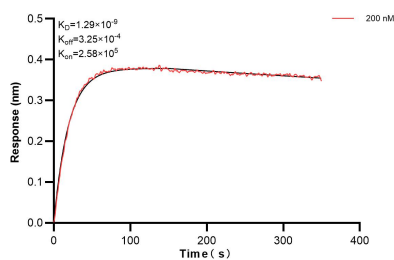
The mean CKAP4 concentration was determined to be 13.6 ng/mL in A431 cell extract based on a 1.3 mg/mL extract load and 9.2 ng/mL in HeLa cell extract based on a 1.3 mg/mL extract load.



Cytometric bead array standard curve of MP01324-1, CKAP4 Recombinant Matched Antibody Pair, PBS Only. Capture antibody: 84485-1-PBS. Detection antibody: 84485-2-PBS. Standard: Ag10022. Range: 0.156-20 ng/mL.



Cytometric bead array standard curve of MP01324-2, CKAP4 Recombinant Matched Antibody Pair, PBS Only. Capture antibody: 84485-1-PBS. Detection antibody: 84485-3-PBS. Standard: Ag10022. Range: 0.313-20 ng/mL.



Biolayer interferometry (BLI) kinetic assay of 84485-1-PBS against Human CKAP4 was performed. The affinity constant is 1.29 nM.